



Gunnersbury Drive, W5

£415 Per week

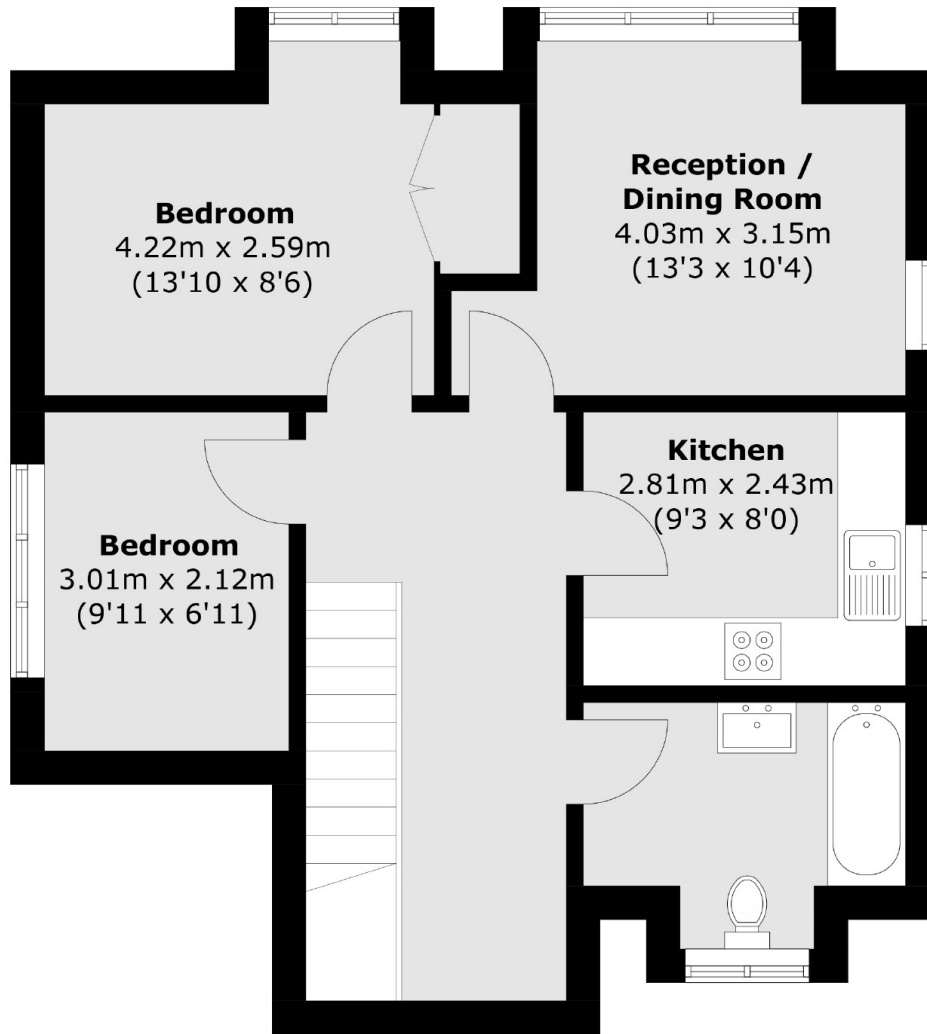
Newly refurbished, this spacious first-floor two-bedroom home offers modern living in a peaceful setting. Enjoy new interiors, ample natural light, and quiet surroundings, perfect for comfort and relaxation.

Located on Gunnersbury Drive with excellent transport links. Close to Gunnersbury Park, shops and amenities, it provides a perfect balance of green spaces and convenience.

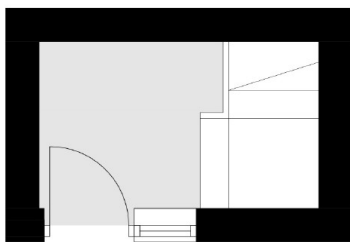
Features

Newly Refurbished
Two Bedrooms
First Floor
Separate Entrance
Unfurnished
Spacious

Gunnersbury Drive,
London, W5



First Floor



Ground Floor

Total area (approx.): 59.1 sq. m (636.1 sq. ft)