



Ridley Avenue, W13

£599,950

End of terrace two bedroom Victorian Cottage situated in the heart of Northfields.

Priced to reflect the need for renovation, this is ideal for a purchaser looking to put their own stamp on their home.

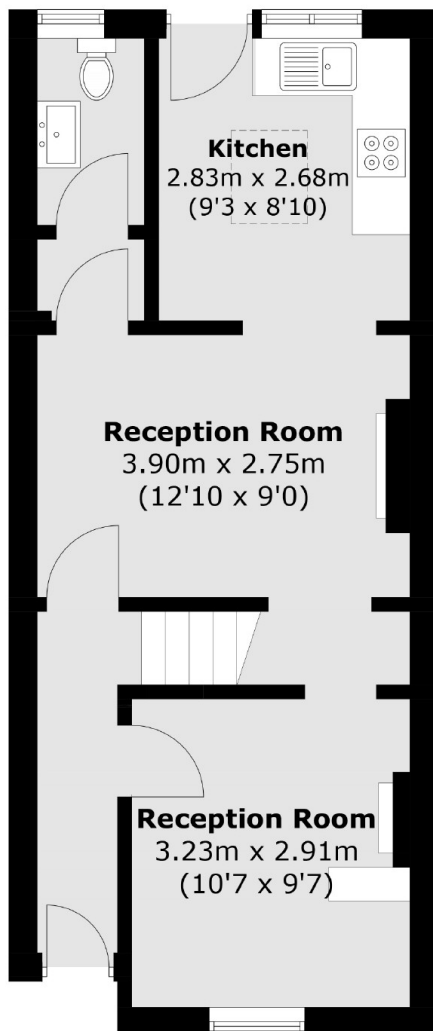
Set in a sought after location close to Lammas Park and Piccadilly line tube at Northfields.

Offered with full vacant possession.

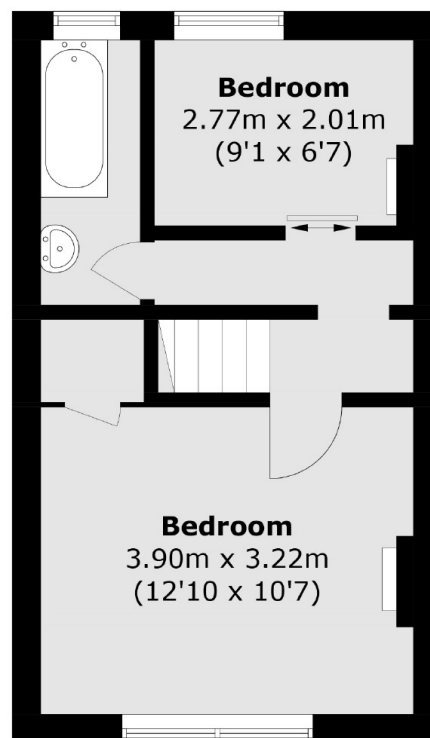
Features

- Victorian Cottage
- Renovation Opportunities
- South Facing Garden
- End of Terrace
- Close to Tube
- No Onward Chain

Ridley Avenue,
London, W13



Ground Floor



First Floor

Total area (approx.): 66.9 sq. m (720.1 sq. ft)

Dexters

Northfields
140 Northfield Avenue
London
W13 9SB
Sales
020 8545 8588

Energy Rating: . We aim to make our particulars both accurate and reliable. However they are not guaranteed; nor do they form part of an offer or contract. If you require clarification on any points then please contact us, especially if you're traveling some distance to view. Please note that appliances and heating systems have not been tested and therefore no warranties can be given as to their good working order.

 **RICS** | Regulated
Estate Agent
and Letting Agent

dexters.co.uk