



Brentwick Gardens, TW8

£600,000

Offers in excess of

This two bedroom end of terrace house is situated on a large plot and has lots of potential for extensions (subject to usual consents).

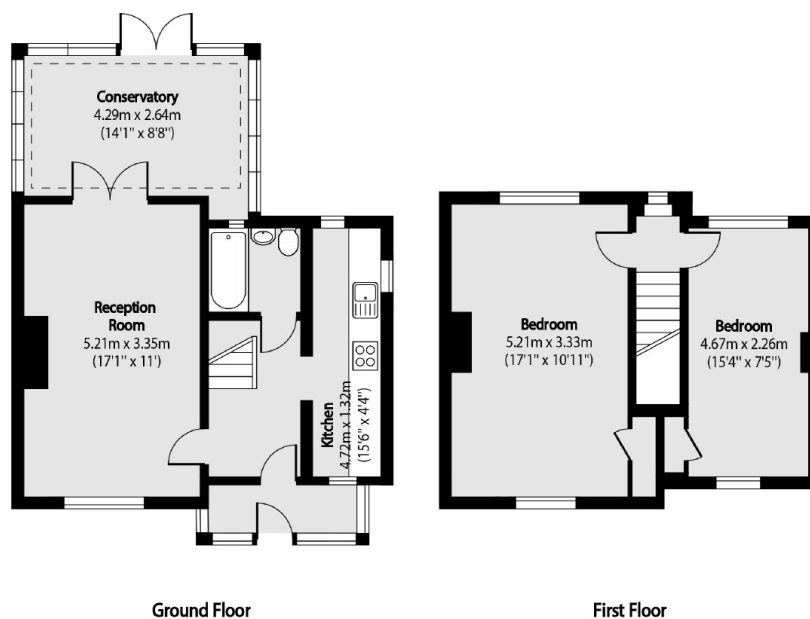
Benefits from off street parking for two cars and a substantial South facing garden.

Ideal for a purchaser looking for a home they can put their own stamp on.

Features

End of Terrace
Off Street Parking
Scope for Extension
Large Garden
South Facing Aspect
Freehold

Brentwick Gardens, Brentford, TW8



Total area (approx): 85.37 sq m (919 sq. ft)