



Brentwick Gardens, TW8

£650,000

This two bedroom end of terrace house is situated on a large plot and has lots of potential for extensions (subject to usual consents).

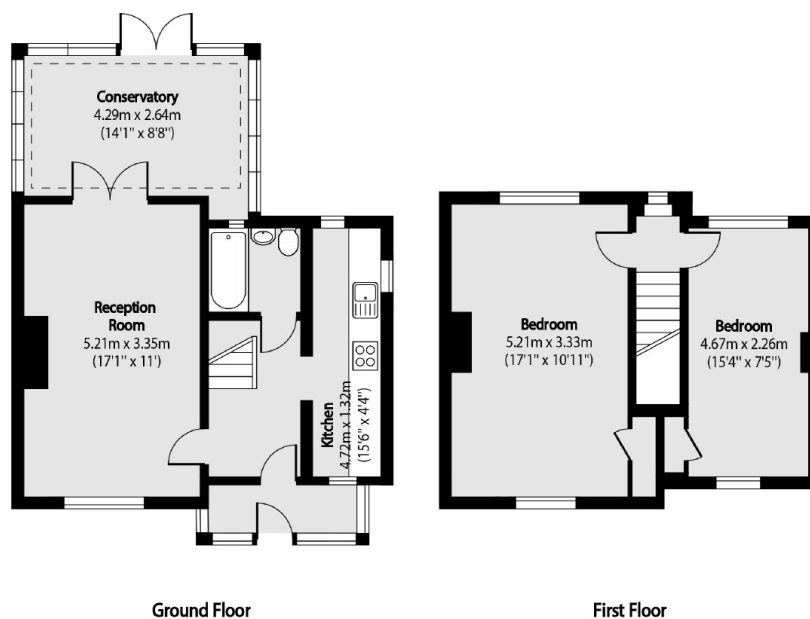
Benefits from off street parking for two cars and a substantial South facing garden.

Ideal for a purchaser looking for a home they can put their own stamp on.

Features

- End of Terrace
- Off Street Parking
- Scope for Extension
- Large Garden
- South Facing Aspect
- Freehold

Brentwick Gardens, Brentford, TW8



Total area (approx): 85.37 sq m (919 sq. ft)