



## Windmill Road, TW8

### £499,950

This remarkable two bedroom split level conversion has been meticulously designed to provide stylish contemporary living space.

Set on the two upper floors of this handsome Victorian building and ideal for a purchaser looking for a property they can move straight into and enjoy.

Located on the West side of Windmill Road, close to Brentford mainline station with Northfields for the Piccadilly line also within reach.

### Features

- Split Level Conversion
- Move In Condition
- Two Double Bedrooms
- Contemporary Finish
- Long Lease
- No Onward Chain





## Windmill Road, TW8

This fantastic split level conversion must be viewed to be fully appreciated.

The first floor accommodation comprises the two double bedrooms, well fitted shower room and useful utility room.

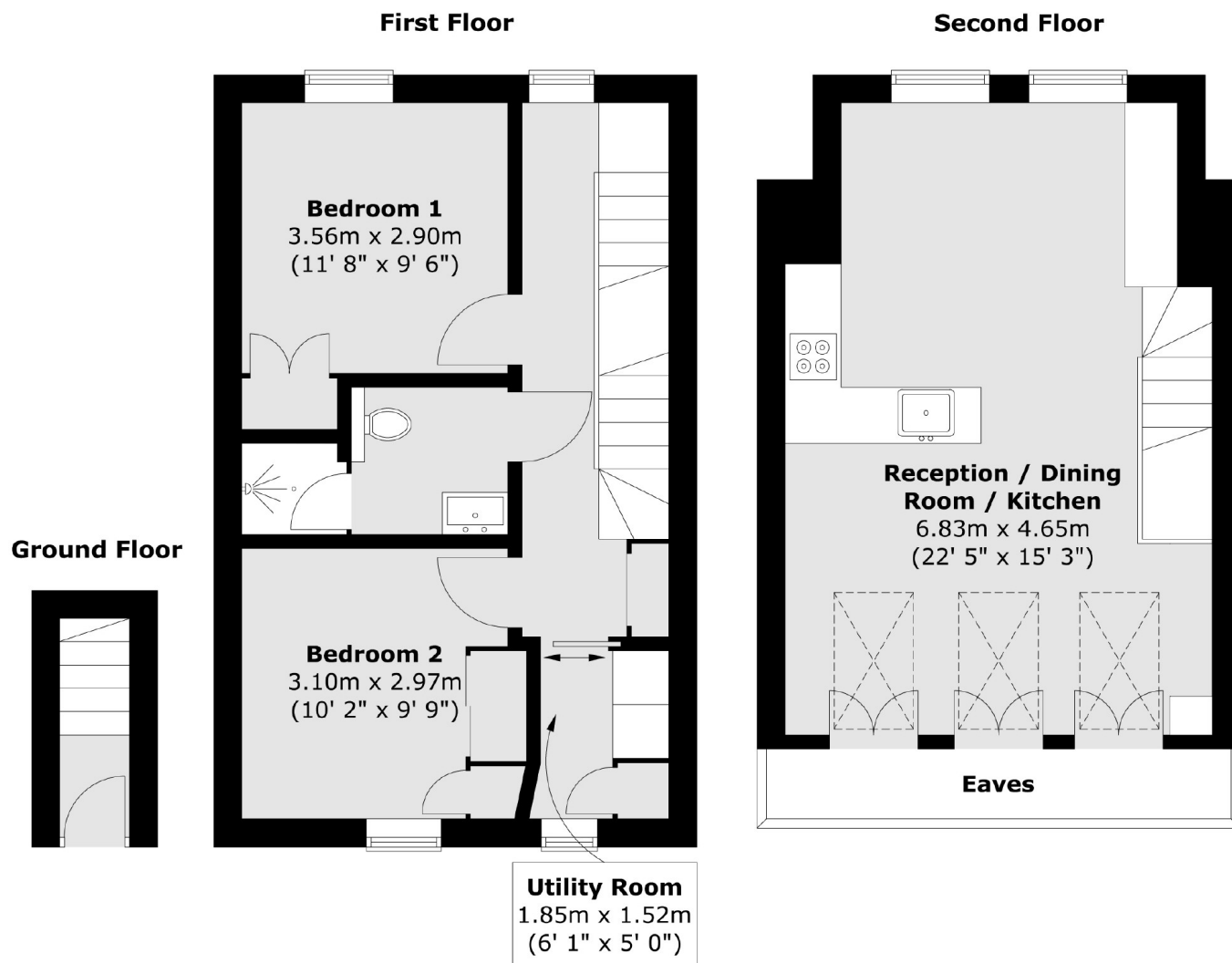
With the show stopper open plan kitchen living room with dual aspect, the well fitted kitchen area has ample room to dine and cosy lounge area with view to Central London.







# Windmill Road, Brentford, TW8



Total area (approx.) : 68.1 sq. m (733 sq. ft)

## Dexters

Northfields  
140 Northfield Avenue  
London  
W13 9SB  
Sales  
020 8545 8588

Energy Rating: C. We aim to make our particulars both accurate and reliable. However they are not guaranteed; nor do they form part of an offer or contract. If you require clarification on any points then please contact us, especially if you're traveling some distance to view. Please note that appliances and heating systems have not been tested and therefore no warranties can be given as to their good working order.

 **RICS** | Regulated  
Estate Agent  
and Letting Agent

[dexters.co.uk](http://dexters.co.uk)