

## Somerset Road, W13

### £775,000

An outstanding three bedroom Duplex apartment which occupies the top two floors of this converted double fronted house.

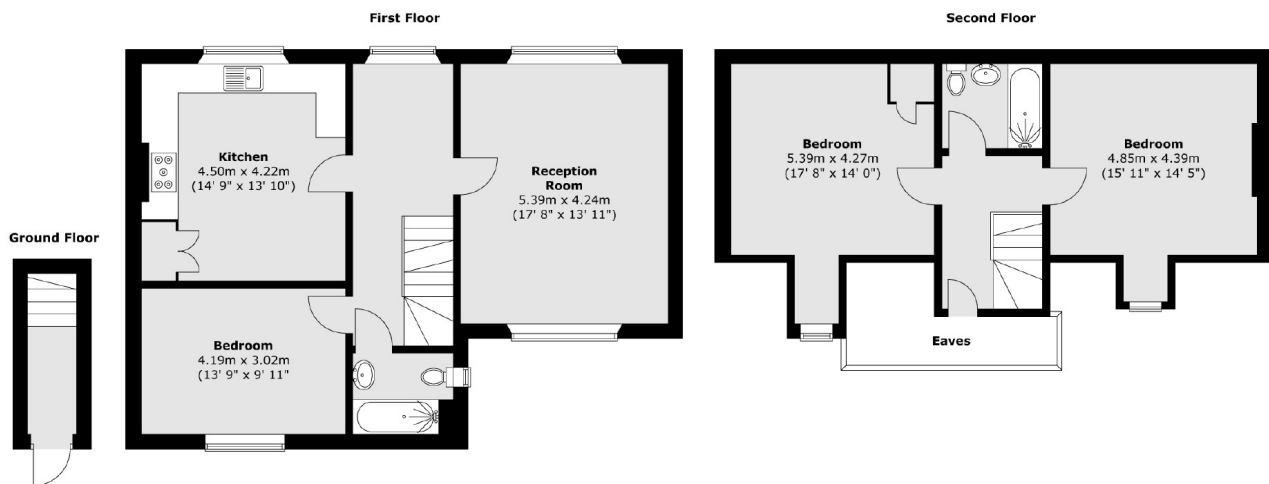
Offering close to 1350 sq.ft of accommodation which enjoys a high standard of fixtures and decoration.

Set in a fantastic location close to Walpole Park with easy access to shopping and transport facilities at West Ealing, Northfields and Ealing Broadway.

### Features

- Period Conversion
- 1350 Sq.Ft
- Long Lease
- Three Double Bedrooms
- Two Bathrooms
- Close to Transport

# Somerset Road, London, W13



Total area (approx.) : 124.7 sq. m (1342 sq. ft)

## Dexters

Northfields  
140 Northfield Avenue  
London  
W13 9SB  
Sales  
020 8545 8588

Energy Rating: D. We aim to make our particulars both accurate and reliable. However they are not guaranteed; nor do they form part of an offer or contract. If you require clarification on any points then please contact us, especially if you're traveling some distance to view. Please note that appliances and heating systems have not been tested and therefore no warranties can be given as to their good working order.



[dexters.co.uk](https://www.dexters.co.uk)