



## Ealing Park Gardens, W5

£369 Per week

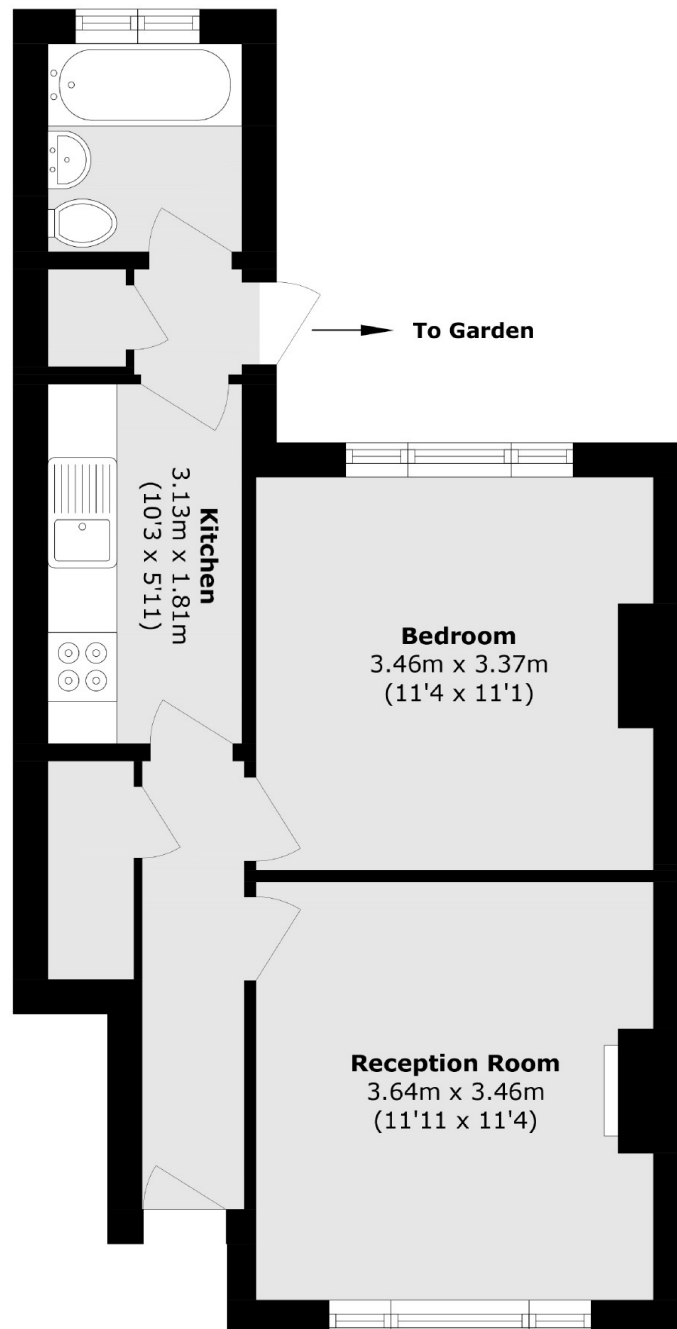
Spacious one-bedroom ground-floor flat featuring a double bedroom, separate kitchen, and a generous private garden. Ideal for comfortable living with ample outdoor space for relaxation or entertaining.

Ealing Park Gardens offers excellent transport links, green spaces and a vibrant community. Close to shops, parks, and amenities, it provides convenient and comfortable living.

### Features

One Bedroom Flat  
Ground Floor  
Unfurnished  
Close to Station  
Large Garden  
Available Now

# Ealing Park Gardens, London, W5



Total area (approx.): 41.0 sq. m (441.3 sq. ft)