



Wyndham Road, W13

£1,175,000

This handsome 4 bedroom Edwardian house is located in this much sought after area adjacent to Fielding Primary School.

Extended and renovated by the current owners with a particularly high standard of fixtures and fittings.

Located in this excellent Northfield spot just a short walk from local shops, Lammas Park and the Piccadilly line station.

Features

- Edwardian House
- Fully Extended
- South Facing Garden
- Excellent Fixtures
- Outstanding Schools
- Close to Tube



Wyndham Road, W13

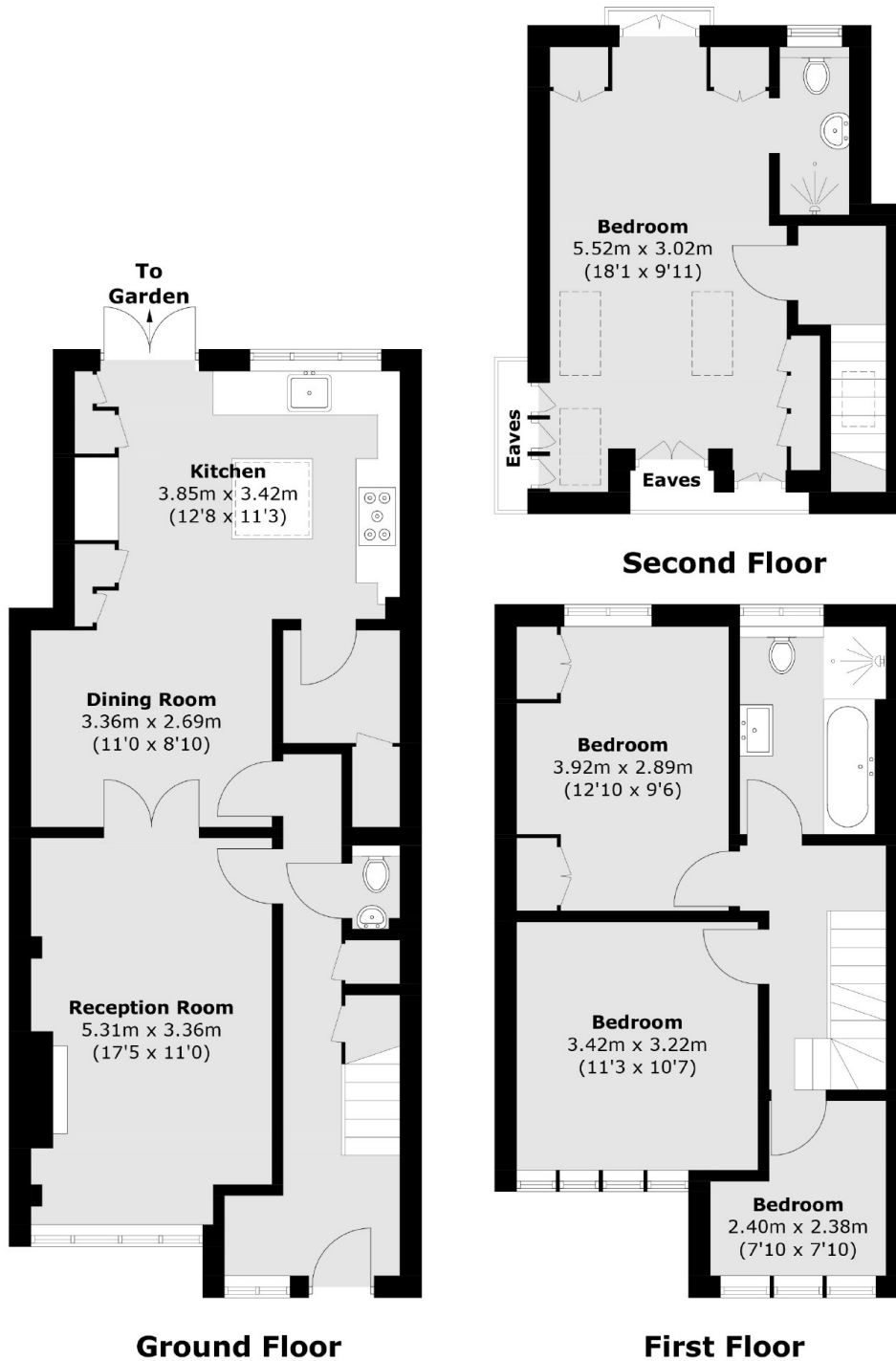
You will find this impressive house on the South side of the road. The feature open porch and original front door lead through to the reception hall which has a guest WC.

Most of the ground floor has a beautiful reclaimed church floor which compliments the reconditioned radiators. The two reception rooms are open plan to the hand made kitchen which has a useful utility room. On the upper two floors, there are four bedrooms (main with ensuite) and a well fitted bathroom.

Perfectly positioned for Northfields and a fantastic choice of Primary and Secondary Schools.



Wyndham Road, London, W13



Total area (approx.): 126.1 sq. m (1,357.4 sq. ft)
(Excluding Eaves)

Dexters

Northfields
140 Northfield Avenue
London
W13 9SB
Sales
020 8545 8588

Energy Rating: D. We aim to make our particulars both accurate and reliable. However they are not guaranteed; nor do they form part of an offer or contract. If you require clarification on any points then please contact us, especially if you're traveling some distance to view. Please note that appliances and heating systems have not been tested and therefore no warranties can be given as to their good working order.

 **RICS** | Regulated
Estate Agent
and Letting Agent

[dexters.co.uk](https://www.dexters.co.uk)