



## Cumberland Road, W7

£375,000

A really smart one bedroom ground floor maisonette which comes with its own private garden.

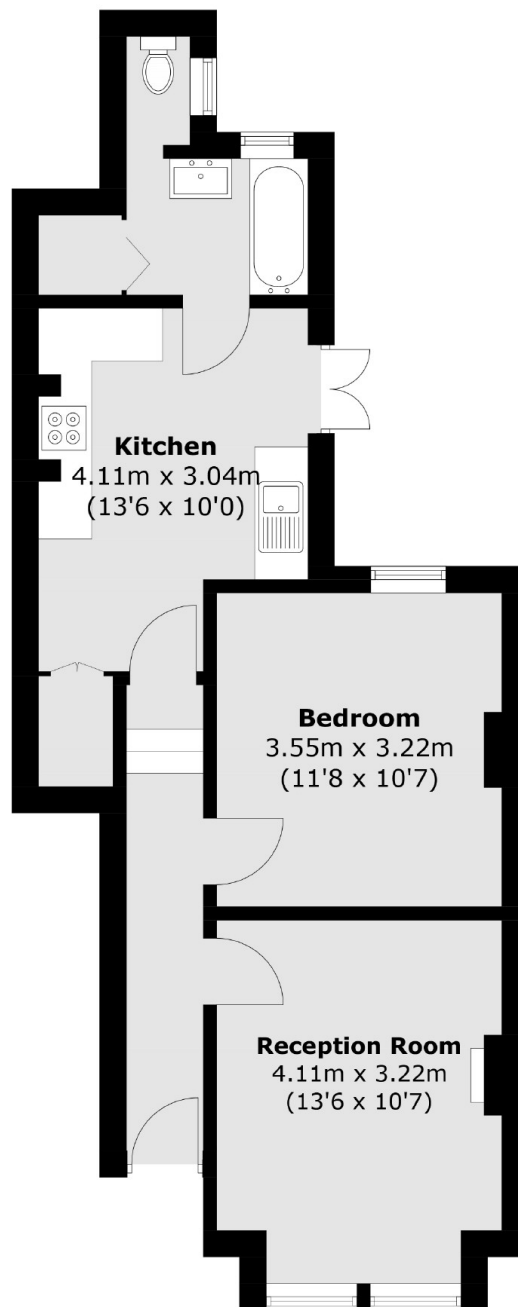
Ideal for a purchaser looking for a home they can just move into and enjoy straight away.

Set in a popular location close to Elthorne Park and both the Elizabeth and Piccadilly lines.

### Features

- Garden Maisonette
- Excellent Condition
- Moments from Elthorne Park
- Victorian Building
- Close to Transport
- Long Lease

Cumberland Road,  
London, W7



Total area (approx.): 48.7 sq. m (524.2 sq. ft)

**Dexters**

Northfields  
140 Northfield Avenue  
London  
W13 9SB  
Sales  
020 8545 8588

Energy Rating: D. We aim to make our particulars both accurate and reliable. However they are not guaranteed; nor do they form part of an offer or contract. If you require clarification on any points then please contact us, especially if you're traveling some distance to view. Please note that appliances and heating systems have not been tested and therefore no warranties can be given as to their good working order.

 **RICS** | Regulated  
Estate Agent  
and Letting Agent

[dexters.co.uk](https://www.dexters.co.uk)