



## Marnham Crescent, UB6

### £599,950

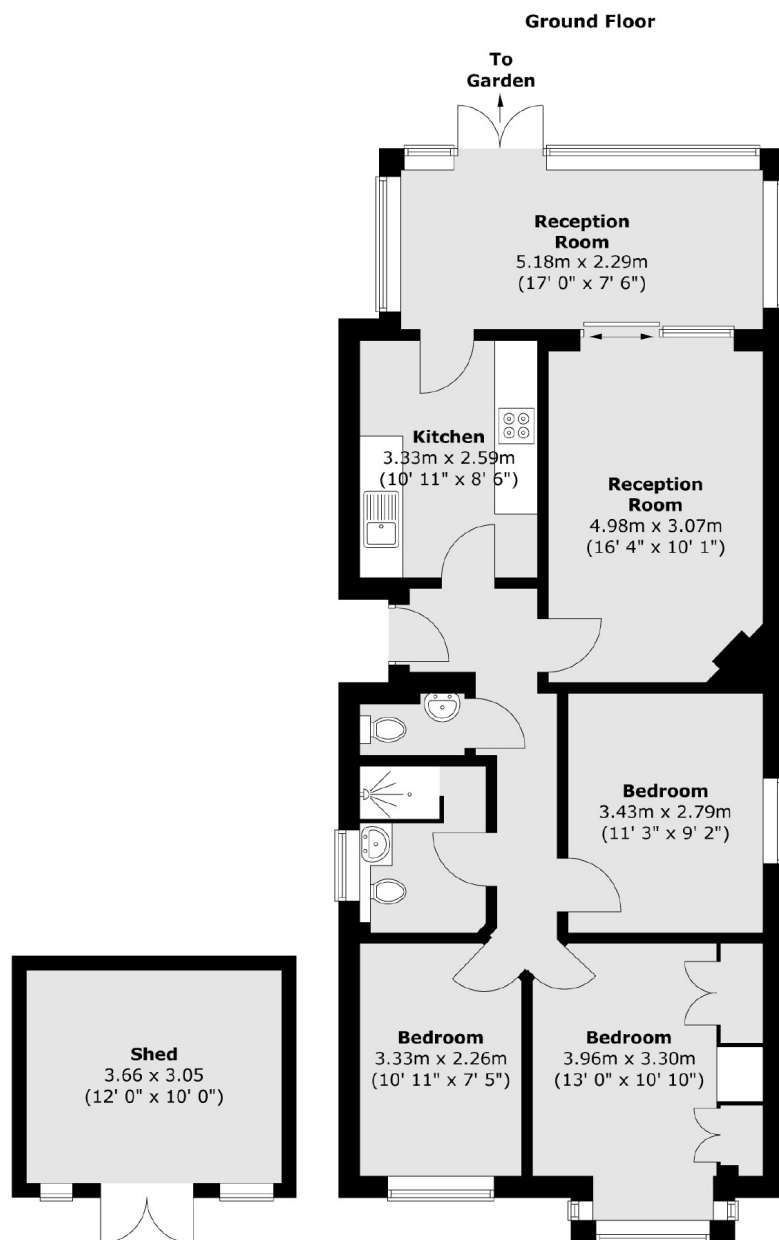
A detached three bedroom bungalow currently spanning in excess of 850 sq.ft with off street parking for two cars and a south facing garden. This property offers a recently refurbished bathroom and kitchen and is situated in a convenient location, close to all local shops and amenities.

The property is a 1.2 mile walk from Greenford Station. A short walk to The Broadway which is served by multiple bus routes.

### Features

Detached Bungalow  
Three Bedrooms  
Recently Refurbished  
Off Street Parking  
Excess of 850 sq.ft  
Nearby to Ravenor Park

# Marnham Crescent, Greenford, UB6



Total area (approx.) : 81.8 sq. m (881 sq. ft)  
Total shed area (approx.) : 11.2 sq. m (120 sq. ft)

## Dexters

Northfields  
140 Northfield Avenue  
London  
W13 9SB  
Sales  
020 8545 8588

Energy Rating: C. We aim to make our particulars both accurate and reliable. However they are not guaranteed; nor do they form part of an offer or contract. If you require clarification on any points then please contact us, especially if you're traveling some distance to view. Please note that appliances and heating systems have not been tested and therefore no warranties can be given as to their good working order.

 **RICS** | Regulated  
Estate Agent  
and Letting Agent

[dexters.co.uk](https://www.dexters.co.uk)