



Boston Gardens, TW8

£1,200,000

Offers in excess of

This five bedroom semi-detached house has been fully extended and renovated throughout to a fantastic standard. Comes with a secluded West facing garden and off street parking.

Ideal for a family looking for a home to move straight into and enjoy from Day 1.

Well positioned for outstanding local schools and with Boston Manor Piccadilly line station at the end of the road.

Features

Semi-Detached
Fully Extended
Excellent Condition
Home Office Annexe
Good School Catchment
Chain Free



Boston Gardens, TW8

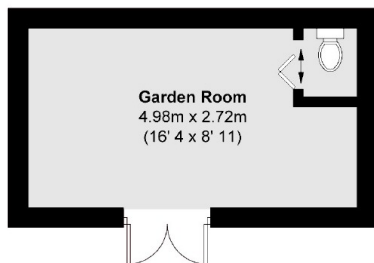
You will find this impressive semi-detached house on the West facing side of this Crescent. With off street parking for two cars.

The reception hall has a guest WC and a useful utility room. The bay window front reception has a feature fireplace before you come to the fantastic open plan kitchen living room with bi-fold doors to the rear patio. On the two upper floors there are five bedrooms, the well fitted bathroom and an extra shower room.

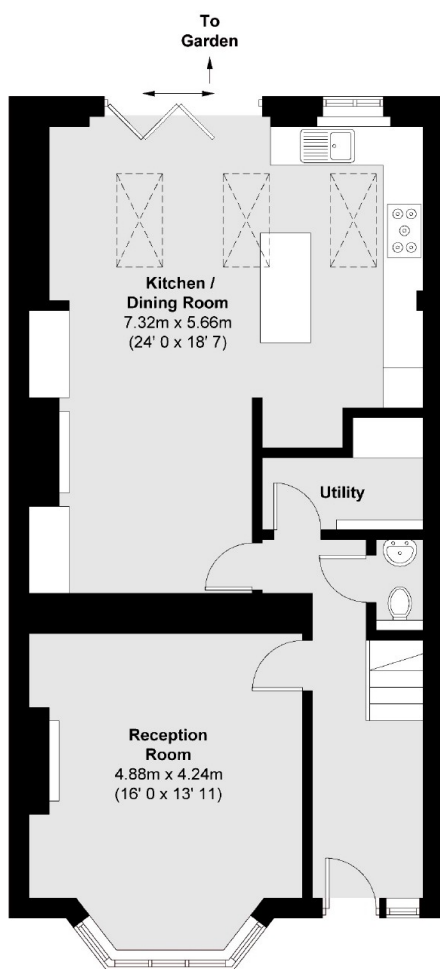
There are too many features to list here so come and view and we'll talk you through them.



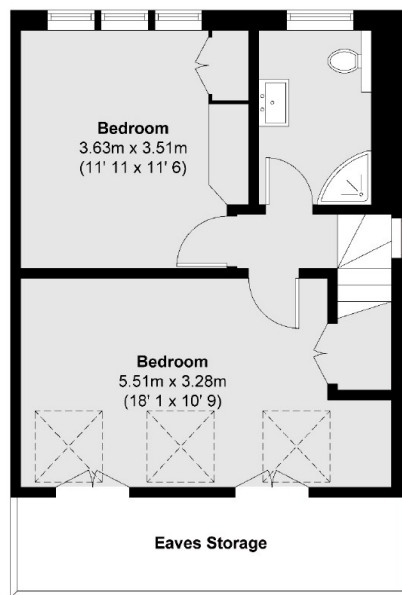
Boston Gardens, Brentford, TW8



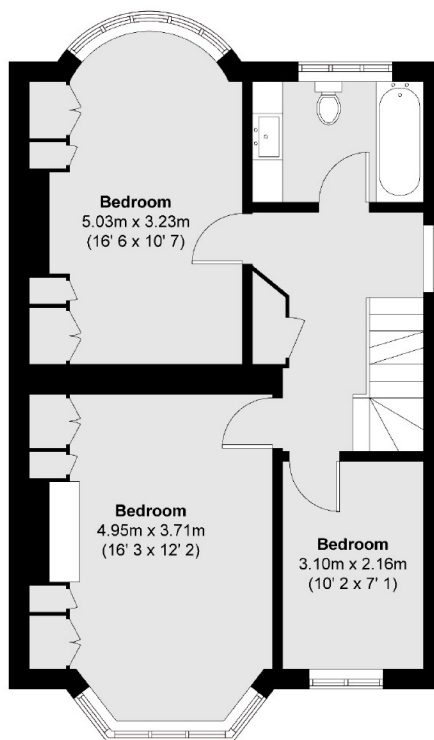
(Not Shown In Actual Location / Orientation)



Ground Floor



Second Floor



First Floor

APPROX. GROSS INTERNAL FLOOR AREA = 1811 SQFT / 168.3 SQM
APPROX. GROSS EXTERNAL GARDEN ROOM AREA = 148 SQFT / 13.7 SQM

Dexters

Northfields
140 Northfield Avenue
London
W13 9SB
Sales
020 8545 8588

Energy Rating: C. We aim to make our particulars both accurate and reliable. However they are not guaranteed; nor do they form part of an offer or contract. If you require clarification on any points then please contact us, especially if you're traveling some distance to view. Please note that appliances and heating systems have not been tested and therefore no warranties can be given as to their good working order.

RICS Regulated
Estate Agent
and Letting Agent

dexters.co.uk