



Windmill Road, TW8

£1,050,000

An exceptional Edwardian house which has been meticulously designed, extended and refurbished by the current owners.

Providing spacious living and entertaining space with a landscaped West facing garden.

Located in this increasingly popular area, well positioned for outstanding state primary and secondary schools and within walking distance of local shops and Piccadilly line at Northfields.

Features



Windmill Road, TW8

You will find this handsome brick fronted house on the West side of the road.

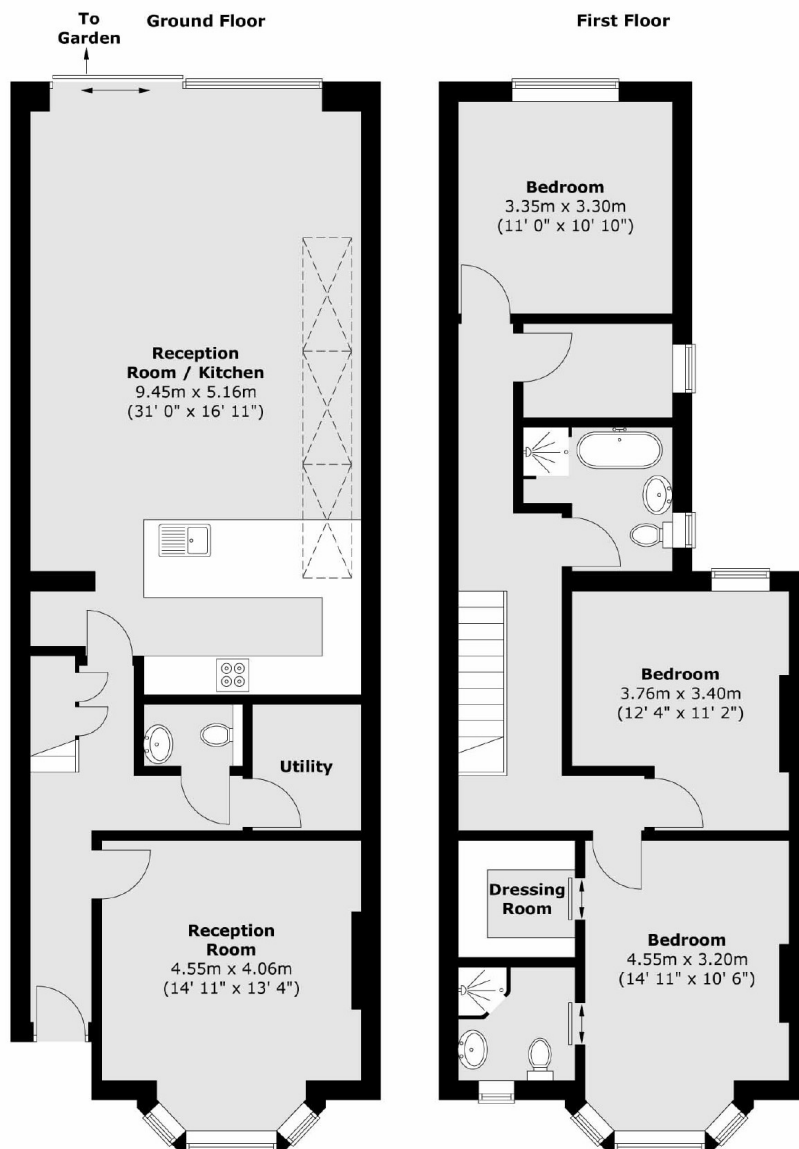
The reception hall leads to the bay windowed front room with wood burner stove. There is an inner lobby to a guest WC and a useful utility room. You then come to the vast open plan kitchen/living room with sliding doors to the patio. We see a lot of similar extensions and this is one of the best.

The upstairs is cleverly laid out with three double bedrooms (main ensuite), a home office and a well fitted main bathroom. There is further potential to extend into the loft.

A truly outstanding home that must be viewed to be appreciated.



Windmill Road, Brentford, TW8



Total area (approx.) : 148.1 sq. m (1594 sq. ft)

Dexters

Northfields
140 Northfield Avenue
London
W13 9SB
Sales
020 8545 8588

Energy Rating: C. We aim to make our particulars both accurate and reliable. However they are not guaranteed; nor do they form part of an offer or contract. If you require clarification on any points then please contact us, especially if you're traveling some distance to view. Please note that appliances and heating systems have not been tested and therefore no warranties can be given as to their good working order.

 **RICS** | Regulated
Estate Agent
and Letting Agent

[dexters.co.uk](https://www.dexters.co.uk)