



Carlyle Road, W5

£675,000

Impressive garden floor conversion flat occupying the entire ground floor of this substantial Victorian building.

The private entrance is via the original smart front door. There are three good sized bedrooms, a spacious and bright open plan kitchen/living room, utility room and a good sized bathroom.

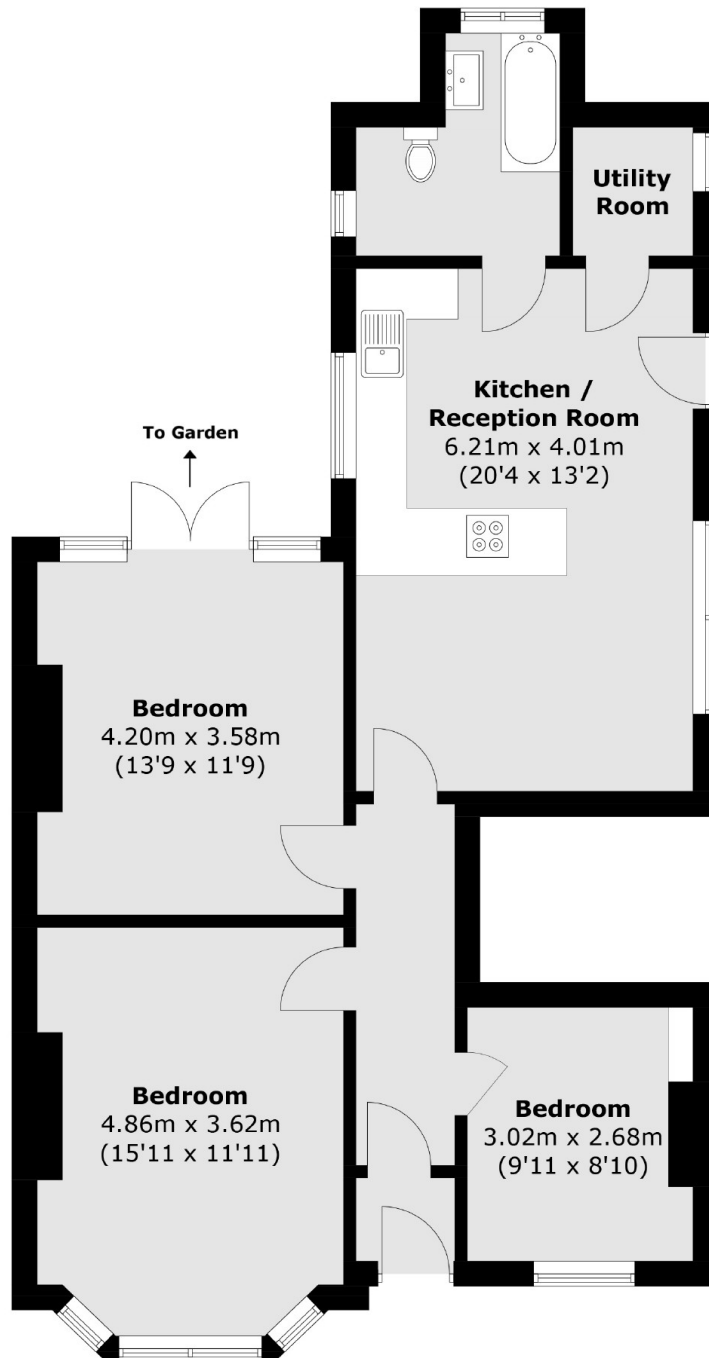
There are two ways to access the large private South facing garden.

Located on a quiet residential road, well positioned for a choice of public transport.

Features

- Garden Conversion
- Three Bedrooms
- Period Features
- Private Entrance
- Long Lease
- No Onward Chain

Carlyle Road,
London, W5



Total area (approx.): 82.7 sq. m (890.1 sq. ft)

Dexters

Northfields
140 Northfield Avenue
London
W13 9SB
Sales
020 8545 8588

Energy Rating: C. We aim to make our particulars both accurate and reliable. However they are not guaranteed; nor do they form part of an offer or contract. If you require clarification on any points then please contact us, especially if you're traveling some distance to view. Please note that appliances and heating systems have not been tested and therefore no warranties can be given as to their good working order.

 **RICS** | Regulated
Estate Agent
and Letting Agent

[dexters.co.uk](https://www.dexters.co.uk)