



Jessamine Road, W7

£461 Per week

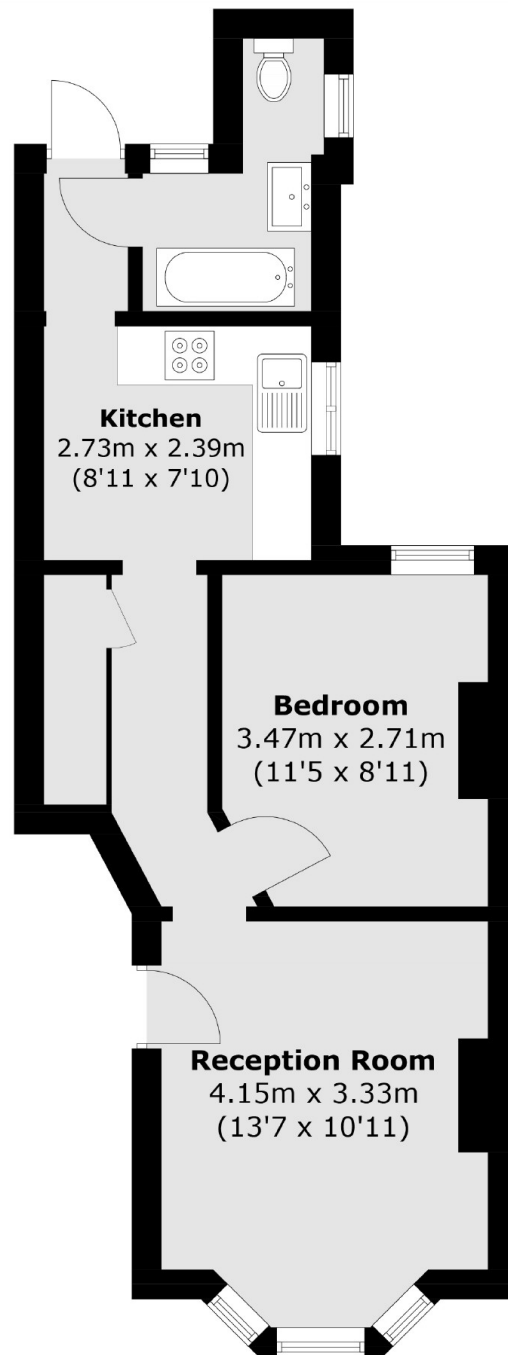
A ground floor one bedroom apartment with a private rear garden. The apartment also has a high ceilings making for a bright reception leading to the kitchen with integrated appliances.

The flat is ideally located for both Boston Manor (Piccadilly Line) & Hanwell Station (Elizabeth Line) and within easy access of the shops and amenities of West Ealing and also to the A4/M4.

Features

- One Bedroom
- Ground Floor
- Private Garden
- High Ceilings
- Integrated Kitchen
- Close to Amenities

Jessamine Road,
London, W7



Total area (approx.): 40.2 sq. m (432.7 sq. ft)

Dexters

Northfields
140 Northfield Avenue
London
W13 9SB
Lettings
020 8545 8589

Energy Rating: C. We aim to make our particulars both accurate and reliable. However they are not guaranteed; nor do they form part of an offer or contract. If you require clarification on any points then please contact us, especially if you're traveling some distance to view. Please note that appliances and heating systems have not been tested and therefore no warranties can be given as to their good working order.

 **RICS** | Regulated
Estate Agent
and Letting Agent

[dexters.co.uk](https://www.dexters.co.uk)