



Little Ealing Lane, W5 £500,000

A two double bedroom apartment on the first floor of this impressive Grade II Listed Building.

Offers over 800 Sq Ft of living space and benefits from allocated parking.

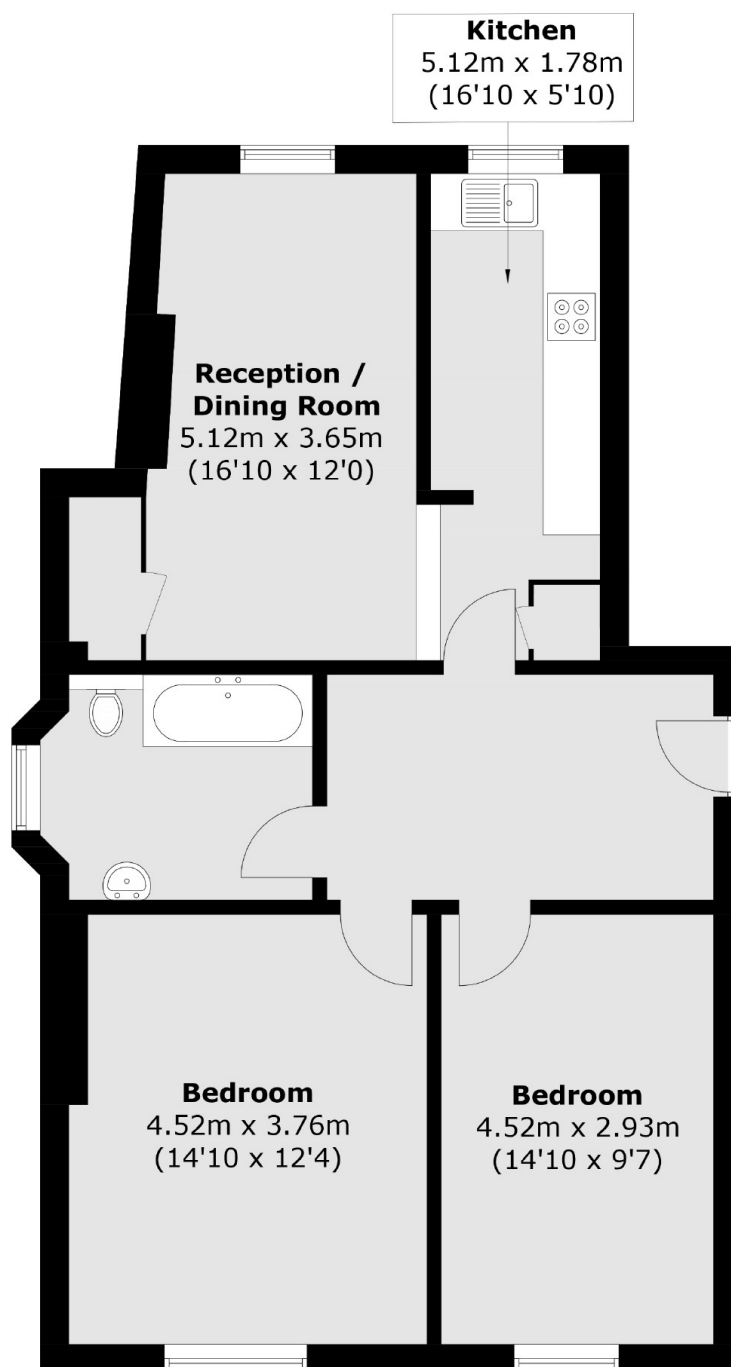
Offered with no onward chain.

Located only 350 yards from Northfields Underground Station and within easy access to Ealing Broadway and all amenities of Northfields Avenue.

Features

- Two Double Bedrooms
- One Bathroom
- Grade II Listed Building
- Off Street Parking
- Communal Garden
- Over 800 Sq Ft

Little Ealing Lane,
London, W5



Total area (approx.): 74.5 sq. m (801.9 sq. ft)

Dexters

Northfields
140 Northfield Avenue
London
W13 9SB
Sales
020 8545 8588

Energy Rating: D. We aim to make our particulars both accurate and reliable. However they are not guaranteed; nor do they form part of an offer or contract. If you require clarification on any points then please contact us, especially if you're traveling some distance to view. Please note that appliances and heating systems have not been tested and therefore no warranties can be given as to their good working order.

 **RICS** | Regulated
Estate Agent
and Letting Agent

[dexters.co.uk](https://www.dexters.co.uk)