



## Devonshire Road, W5

### £950,000

Edwardian three bedroom house located in this excellent Northfields location. Retains period features throughout and benefits from a South facing garden.

Ideally located close to an excellent array of local shops, parks and cafés. Close to Northfields station (Piccadilly Line) and excellent local schools. There is a choice of highly rated schools including Mount Carmel, Little Ealing and Ealing Fields High School.

### Features

- Family Home
- Three Bedrooms
- Two Bathrooms
- School Catchment
- Landscaped Garden
- Sought After Location





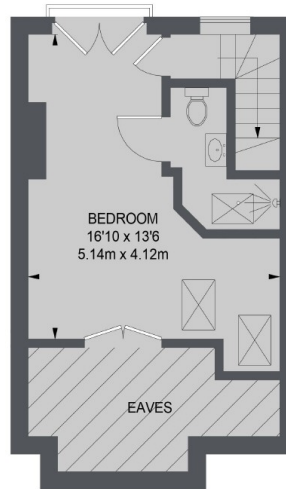
## Devonshire Road, W5

Set on the South side of this sought after Northfields street. The entrance hall leads through to two interconnecting reception rooms with feature fireplace, kitchen and a useful conservatory.

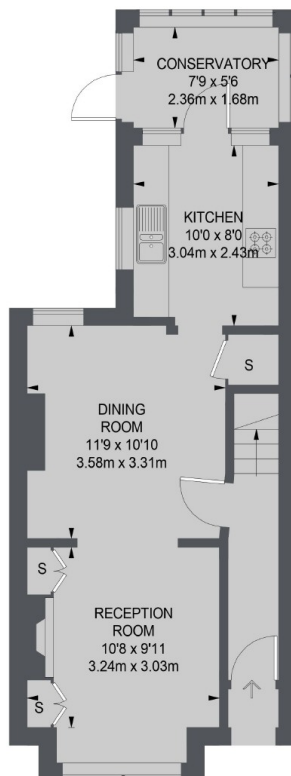
Extended into the loft, upstairs there are three double bedrooms (master with ensuite) and the main bathroom. Viewing is strongly recommended.



# Devonshire Road, London, W5



**SECOND FLOOR**



**GROUND FLOOR**



**FIRST FLOOR**

TOTAL APPROX. FLOOR AREA  
(EXCLUDING EAVES STORAGE)  
1111 SQ. FT. (103.18 SQ. M.)

## Dexters

Northfields  
140 Northfield Avenue  
London  
W13 9SB  
Sales  
020 8545 8588

Energy Rating: . We aim to make our particulars both accurate and reliable. However they are not guaranteed; nor do they form part of an offer or contract. If you require clarification on any points then please contact us, especially if you're traveling some distance to view. Please note that appliances and heating systems have not been tested and therefore no warranties can be given as to their good working order.

 **RICS** | Regulated  
Estate Agent  
and Letting Agent

[dexters.co.uk](https://www.dexters.co.uk)