



Townholm Crescent, W7

£760,000

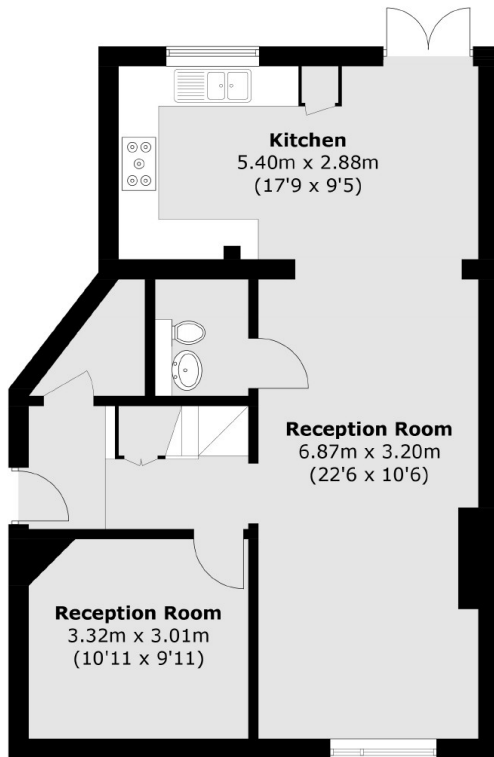
Impressive three bedroom semi detached family home which has been carefully renovated and maintained with great attention to detail. Entrance hall, Guest W.C. Two interconnecting reception rooms, well fitted kitchen, front reception room with the three bedrooms and the modern bathroom upstairs.

Located close to an excellent range of local schools, shops and Elthorne Park as well as close proximity to both Hanwell Elizabeth line station and Boston Manor for the Piccadilly line.

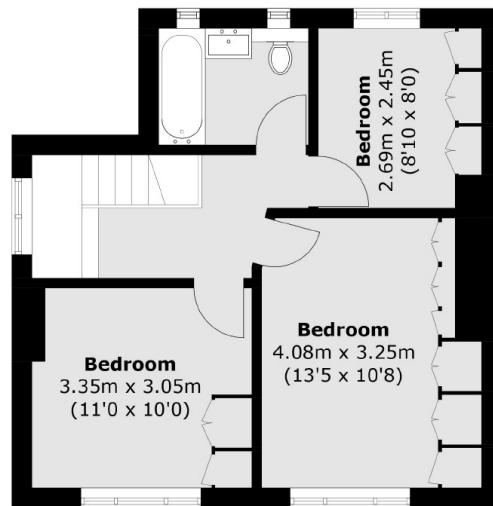
Features

- Semi detached
- Excellent condition
- Three reception rooms
- Off street parking
- Good sized rear garden
- Close to outstanding schools

Townholm Crescent, London, W7



Ground Floor



First Floor

Total area (approx.): 106.0 sq. m (1,140.9 sq. ft)

Dexters

Northfields
140 Northfield Avenue
London
W13 9SB
Sales
020 8545 8588

Energy Rating: C. We aim to make our particulars both accurate and reliable. However they are not guaranteed; nor do they form part of an offer or contract. If you require clarification on any points then please contact us, especially if you're traveling some distance to view. Please note that appliances and heating systems have not been tested and therefore no warranties can be given as to their good working order.

 **RICS** | Regulated
Estate Agent
and Letting Agent

[dexters.co.uk](https://www.dexters.co.uk)