



Westfield Road, W13

£715,000

Two bedroom house situated on the West side of this popular road close to excellent schools and public transport.

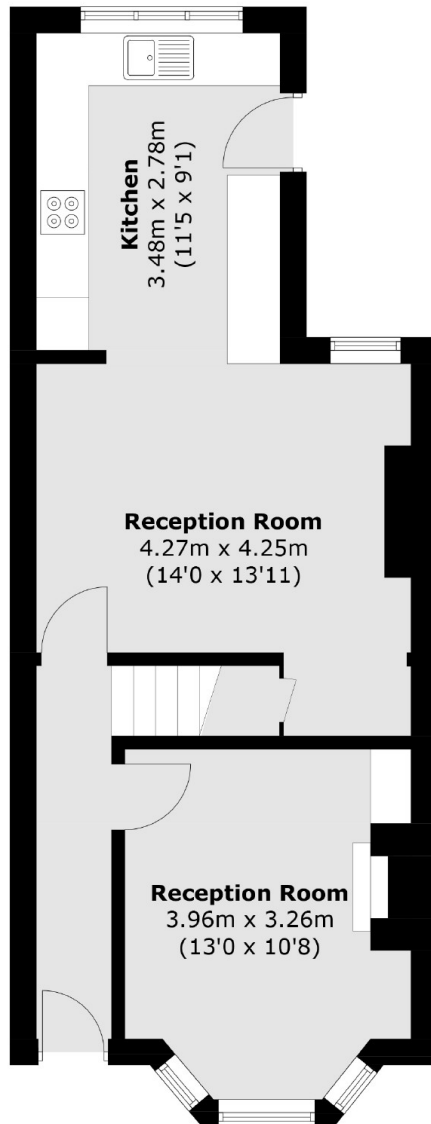
Many neighbouring houses have been extensively extended to the rear and loft. Ready for a purchaser to move in and put their stamp on over time.

Nestled between Northfields (Piccadilly line) and West Ealing (Elizabeth line).

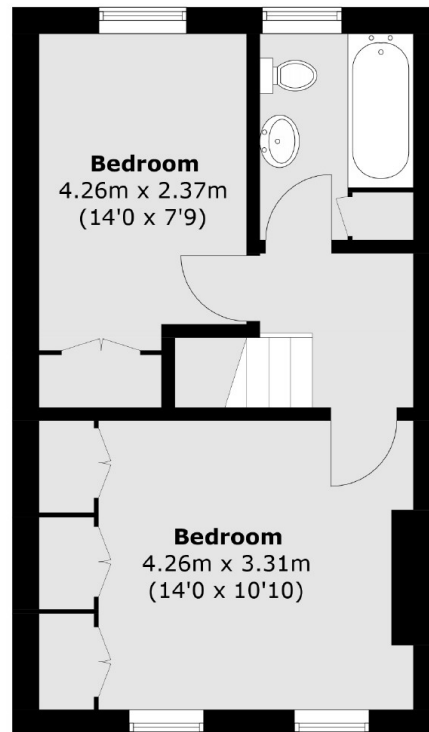
Features

- Victorian House
- Potential for Extension
- West Facing Garden
- Close to Elizabeth Line
- Excellent Schools
- Vacant Possession

Westfield Road,
London, W13



Ground Floor



First Floor

Total area (approx.): 77.9 sq. m (838.5 sq. ft)

Dexters

Northfields
140 Northfield Avenue
London
W13 9SB
Sales
020 8545 8588

Energy Rating: D. We aim to make our particulars both accurate and reliable. However they are not guaranteed; nor do they form part of an offer or contract. If you require clarification on any points then please contact us, especially if you're traveling some distance to view. Please note that appliances and heating systems have not been tested and therefore no warranties can be given as to their good working order.

RICS | Regulated
Estate Agent
and Letting Agent

dexters.co.uk