



## Junction Road, W5

### £399,950

Spacious first floor maisonette which benefits from a private West facing garden.

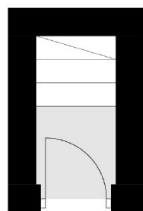
Entrance to the first floor landing, Kitchen/Dining Room, modern fitted bathroom, double bedroom and good sized lounge.

With potential to extend into the loft and close to the Piccadilly line at both Northfields and South Ealing stations.

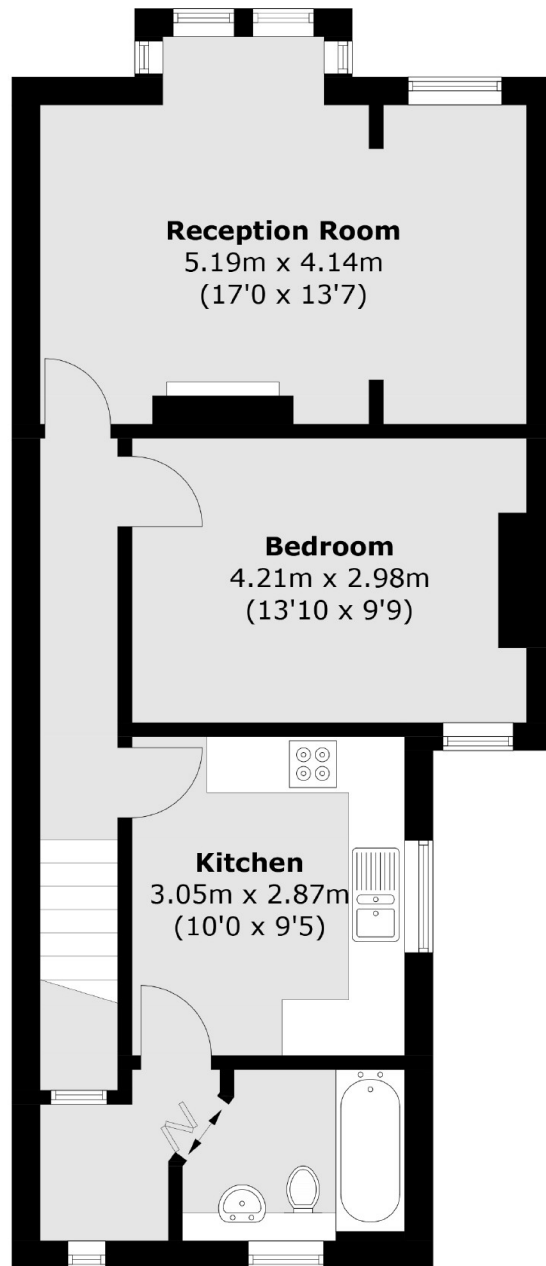
### Features

- First Floor Maisonette
- Long Lease
- Private Garden
- Close to Transport
- Large Loft
- No Onward Chain

Junction Road,  
London, W5



**Ground Floor**



**First Floor**

Total area (approx.): 58.4 sq. m ( 628.6 sq. ft)

**Dexters**

Northfields  
140 Northfield Avenue  
London  
W13 9SB  
Sales  
020 8545 8588

Energy Rating: . We aim to make our particulars both accurate and reliable. However they are not guaranteed; nor do they form part of an offer or contract. If you require clarification on any points then please contact us, especially if you're traveling some distance to view. Please note that appliances and heating systems have not been tested and therefore no warranties can be given as to their good working order.

 **RICS** | Regulated  
Estate Agent  
and Letting Agent

[dexters.co.uk](http://dexters.co.uk)