



Leeland Terrace, W13

£485,000

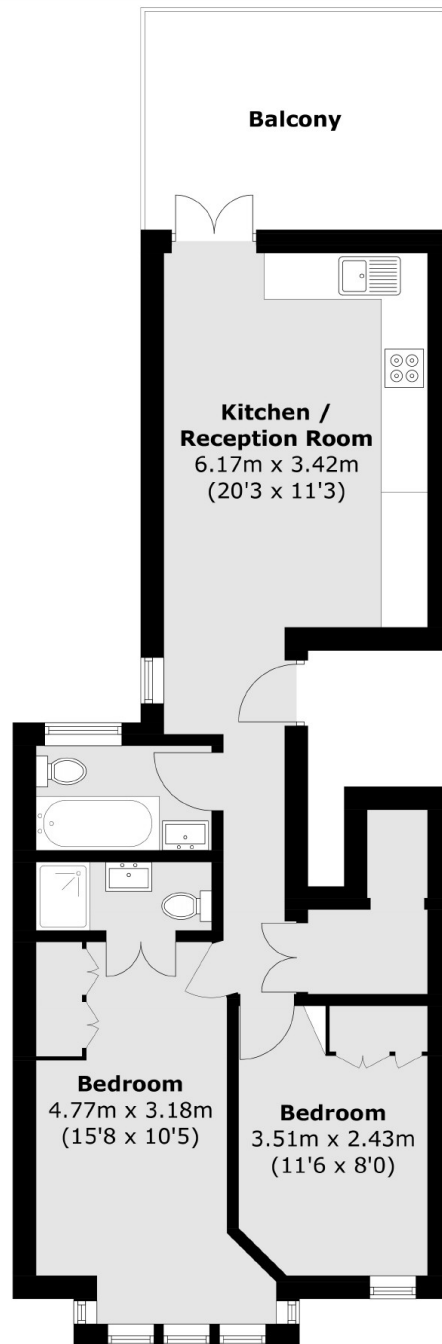
Exceptional two bedroom first floor flat which benefits from use of a private South facing roof terrace and share of freehold.

Located moments from West Ealing (Elizabeth Line) with Northfields for the Piccadilly Line just a short walk away. One of the best flats to come onto the market locally in 2024 so viewing is highly recommended.

Features

- First Floor Flat
- Two Bedrooms
- Access to Roof Terrace
- Excellent Condition
- Close To Transport
- Share Of Freehold

Leeland Terrace,
London, W13



Total area (approx.): 52.9 sq. m (569.4 sq. ft)
Balcony: 11.1 sq. m (119.5 sq. ft)