



Deans Road, W7

£700,000

Three bedroom halls adjoining house located in this increasingly popular location close to excellent schools.

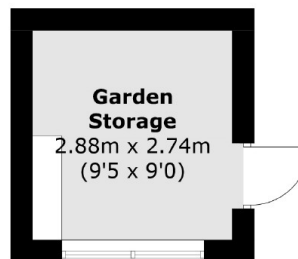
Many neighbouring houses have been extended to the rear and loft areas. Benefits from a West facing garden and priced to reflect the need for some updating.

Offered with no onward chain, viewing is recommended.

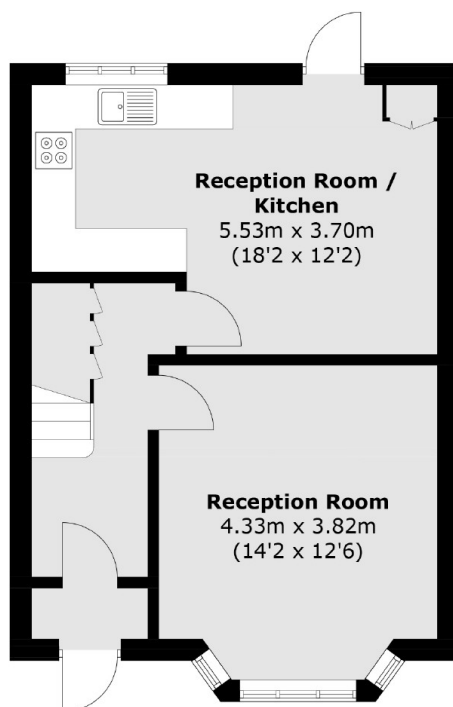
Features

- Three Bedrooms
- West Facing Garden
- Potential for Extension
- Excellent Schools
- Close to Elizabeth Line
- Chain Free Sale

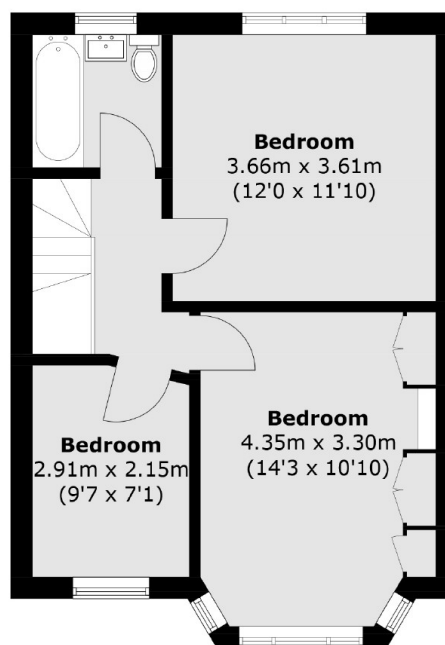
Deans Road,
London, W7



(Not Shown In Actual
Location / Orientation)



Ground Floor



First Floor

Total area (approx.): 86.6 sq. m (932.2 sq. ft)
Garden Storage: 8.0 sq. m (86.1 sq. ft)

Dexters

Northfields
140 Northfield Avenue
London
W13 9SB
Sales
020 8545 8588

Energy Rating: . We aim to make our particulars both accurate and reliable. However they are not guaranteed; nor do they form part of an offer or contract. If you require clarification on any points then please contact us, especially if you're traveling some distance to view. Please note that appliances and heating systems have not been tested and therefore no warranties can be given as to their good working order.

 **RICS** | Regulated
Estate Agent
and Letting Agent

dexters.co.uk