



Church Lane, W5

£1,500,000

A unique and very special Georgian era house (1700s) located in this perfect location adjacent to Lammas Park.

The house retains a real sense of history successfully combined with modern conveniences to create a fantastic character home.

Offered in excellent condition and ready for a purchaser to move straight in and enjoy.

Features

- Grade II listed
- South Facing Garden
- Five Bedrooms
- Basement Storage
- Three Bathrooms
- No Onward Chain



Church Lane, W5

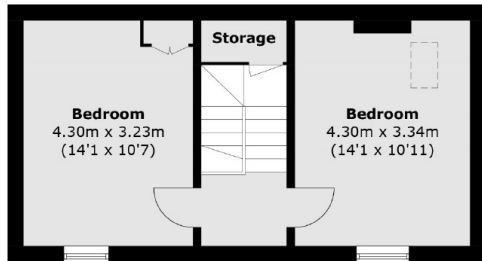
We love the front elevation of this beautiful Georgian house. The entrance hall has formal reception rooms on either side before you come through to the impressive open plan Kitchen/Dining room which enjoys lots of natural light.

There is also a useful utility room, guest WC as well as the 27 ft dry cellar. On the two upper floors there are five bedrooms (main with en suite) and the well fitted main bathroom.

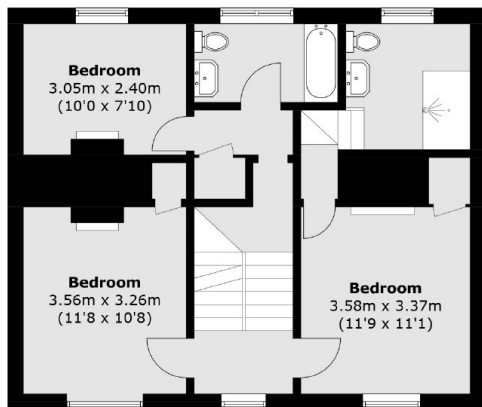
There are simply too many features and benefits to this house to list here so come and view and we will talk you through them. Offered with no onward chain.



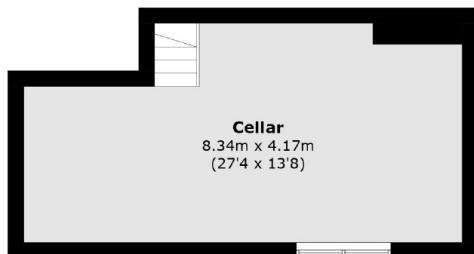
Church Lane, London, W5



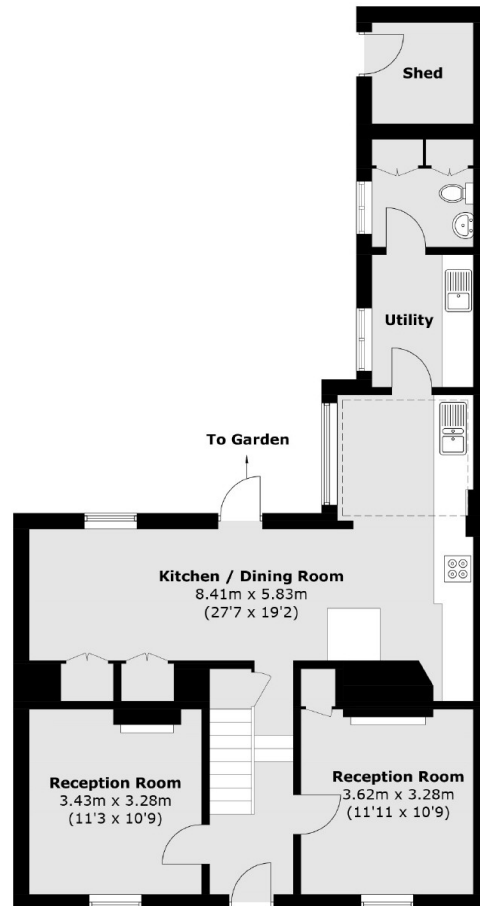
Second Floor



First Floor



Basement



Ground Floor

Approx Internal Area: 203.5 sq. m (2,190.5 sq. ft)
(Including Basement)
Shed: 3.8 sq. m (40.9 sq. ft)
Total: 207.3 sq. m (2,231.4 sq. ft)