



## Little Ealing Lane, W5

£995,000

Impressive five bedroom period house with a South facing garden and off-street parking to the front.

Ideally located for an excellent choice of sought after schools and within easy walking distance of both Northfield and South Ealing for the Piccadilly line.

### Features

- Five Bedroom House
- South Facing Garden
- Off-Street Parking
- Excellent Condition
- Period Features
- Close to Schools





## Little Ealing Lane, W5

Located on the South side of the road with off-street parking to the front. The smart front door leads through to the bay windowed front reception room which interconnects to the rear Dining room. Both receptions have feature original fireplaces and enjoy lots of natural light. There is a modern fitted kitchen and a useful utility which leads to the garden.

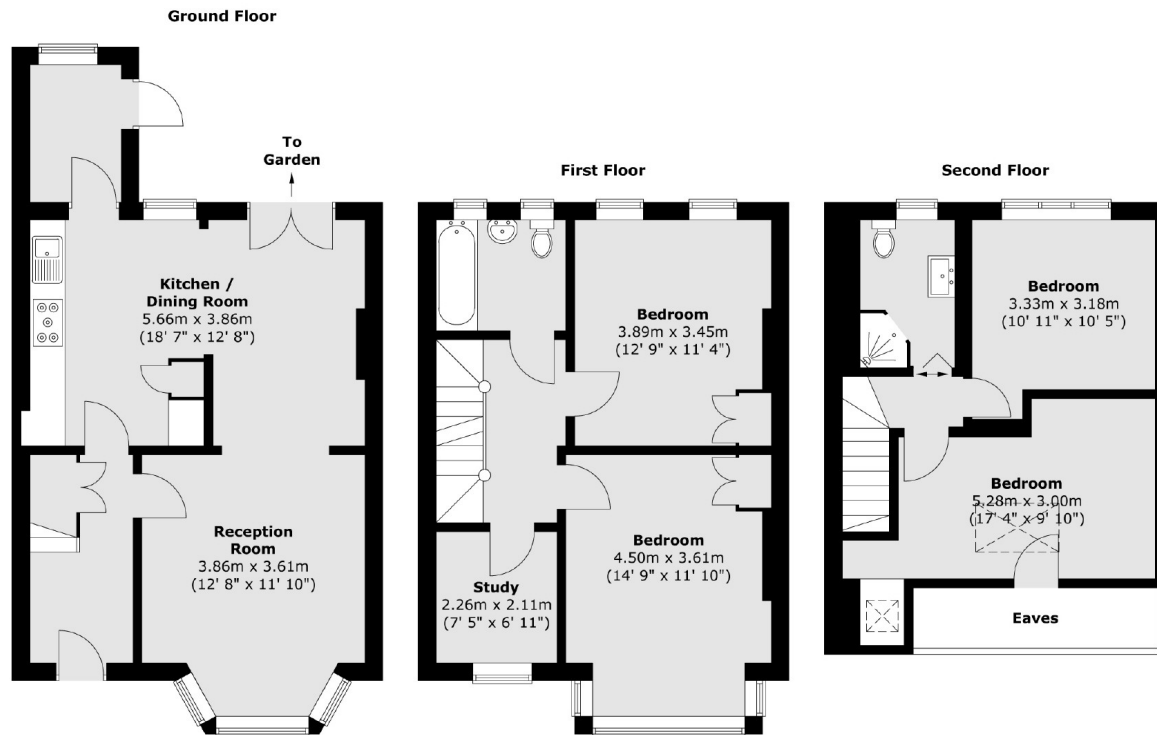
On the two upper floors, there are four double bedrooms (master with ensuite shower room, a single bedroom, study and the main bathroom). A home of real warmth and charm which benefits from a nice South facing which over looks gardens. Close to a host of local shops and parks, viewing comes highly recommended.







# Little Ealing Lane, London, W5



Total area (approx.) : 131.6 sq. m (1416 sq. ft)

## Dexters

Northfields  
140 Northfield Avenue  
London  
W13 9SB  
Sales  
020 8545 8588

Energy Rating: D. We aim to make our particulars both accurate and reliable. However they are not guaranteed; nor do they form part of an offer or contract. If you require clarification on any points then please contact us, especially if you're traveling some distance to view. Please note that appliances and heating systems have not been tested and therefore no warranties can be given as to their good working order.

 **RICS** | Regulated  
Estate Agent  
and Letting Agent

[dexters.co.uk](https://www.dexters.co.uk)