



## Lavington Road, W13

£1,295,000

A four bedroom Edwardian semi-detached house, situated in this most popular location, close to both Lammas and Walpole Parks. Priced to reflect the need for updating, this is an ideal opportunity for a purchaser to update to their own specification.

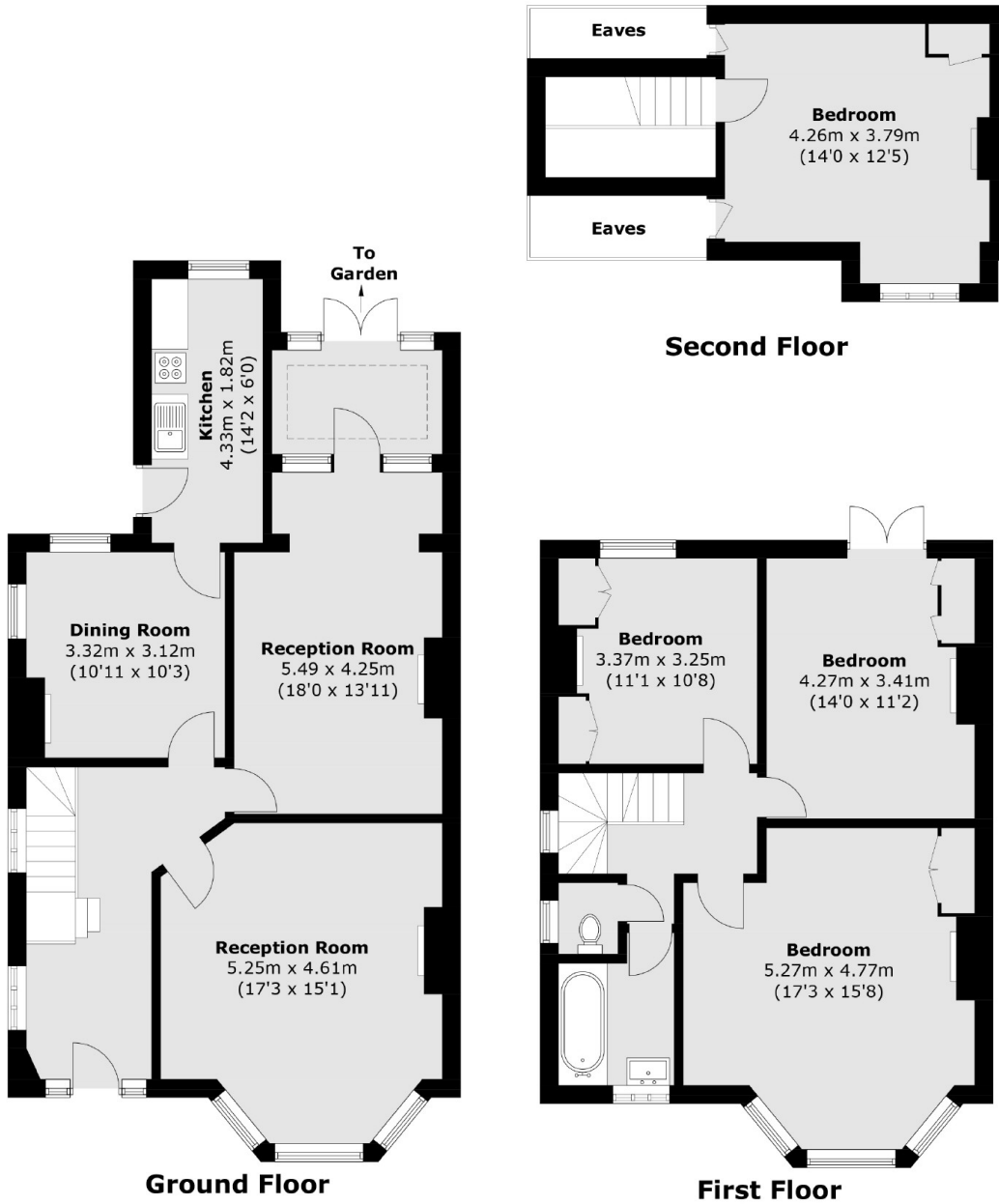
The substantial accommodation is laid out over three floors and many neighbouring houses have been extended to the rear and loft.

Benefits from the retention of period features, a good sized rear garden and a chain free. Well located for shops and transport at Northfields (Piccadilly Line), West Ealing (Elizabeth Line), and Ealing Broadway (District, Central, and Elizabeth Line).

### Features

- Edwardian Semi Detached
- Period Features
- Renovation Opportunity
- No Onward Chain
- Located close to Lammas & Walpole Parks
- Multiple Transport Links

Lavington Road,  
London, W13



Total area (approx.): 163.2 sq. m (1,756.7 sq. ft)  
(Excluding Eaves)