



Midhurst Road, W13

£1,150,000

Handsome four bedroom Edwardian house located in a much sought after Northfields location just moments from Fielding Primary School.

Extended to the rear and loft to provide over 1800 sq ft of accommodation. Benefits from the retention of period features and a chain free move.

Features

- Four Bedroom
- Edwardian House
- No Onward Chain
- Period Features
- Great Location
- Ofsted Outstanding Schools



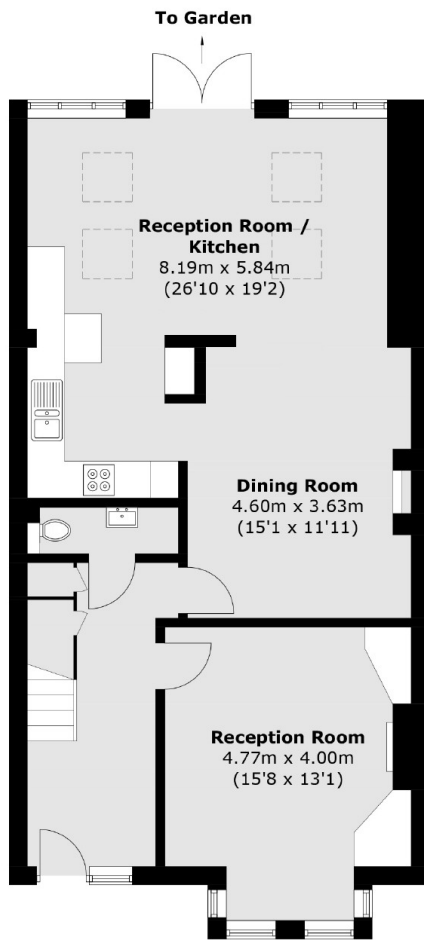
Midhurst Road, W13

On arrival, you will be impressed with the house and the smart front door. The wide reception hall has a guest WC and leads to the formal front reception room with feature fireplace. To the rear, you will find the fantastic open kitchen, Dining/Living room which has double doors to the well tended rear garden.

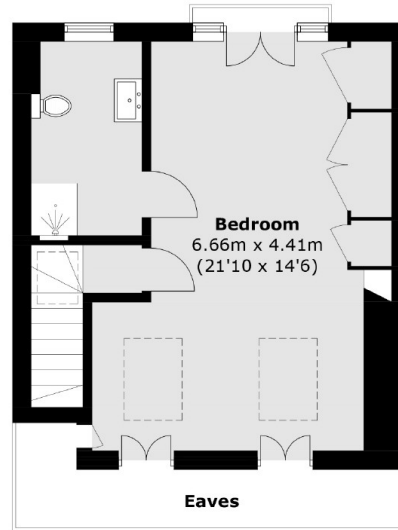
On the two upper floors, you will find the four bedrooms (main with ensuite shower room) and the main bedroom. We love the open rear aspect which looks across the gardens. Midhurst Road is a great location, well positioned for Ofsted outstanding schools and the shops and cafés of Northfields. Offered with no onward chain, early viewing is advised to avoid disappointment.



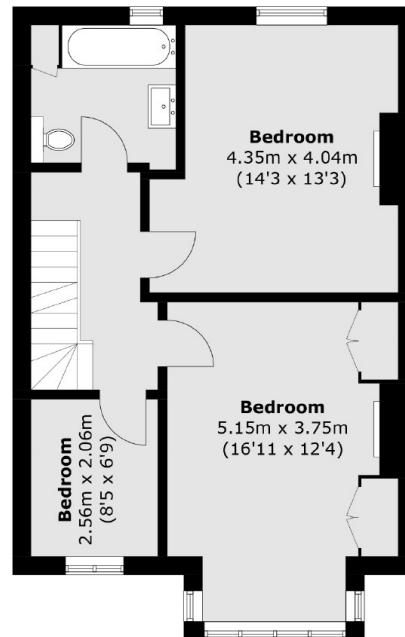
Midhurst Road,
London, W13



Ground Floor



Second Floor



First Floor

Total area (approx.): 169.7 sq. m (1,826.6 sq. ft)
(Excluding Eaves)