



Northfield Avenue, W13

£425,000

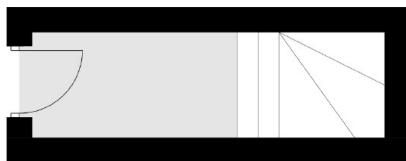
A unique one bedroom apartment with a private courtyard garden. This modern development was built in 2020 and is ideal for a first time buyer or someone looking to downsize.

Smartly presented throughout with a high standard of fixtures and decoration; generously proportioned offering over 680 Sq Ft. Located just moments from Northfields Piccadilly line station with the interesting mix of local independent shops and cafes on your doorstep.

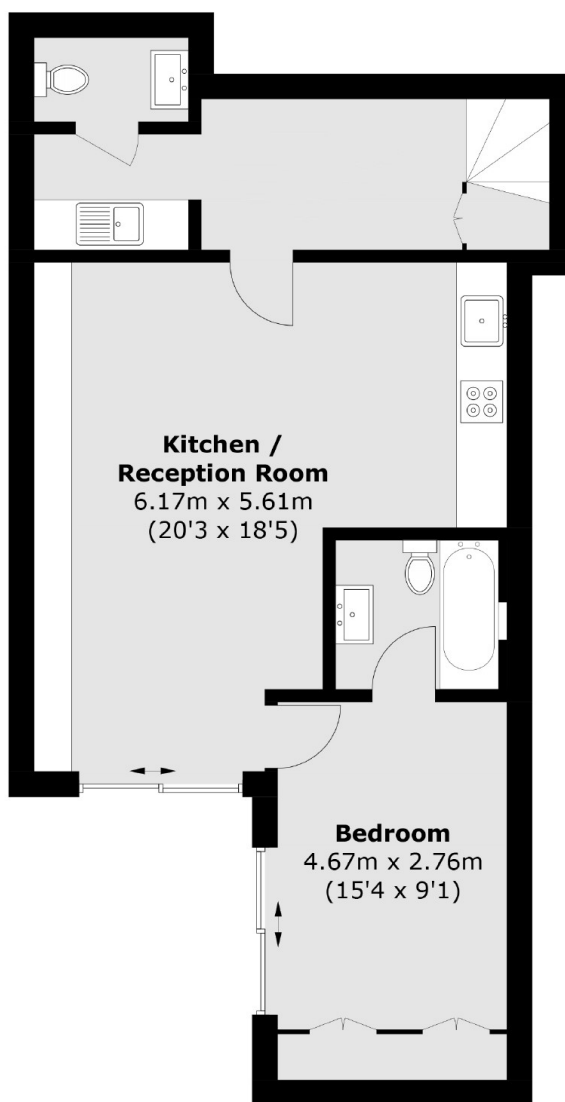
Features

- Lower Ground Floor
- Courtyard Garden
- Guest WC
- Ensuite Bathroom
- Long Lease
- Adjacent to Piccadilly Line

Northfield Avenue,
London, W13



Ground Floor



Basement

Total area (approx.): 63.4 sq. m (682.4 sq. ft)