



Coldershaw Road, W13

£392 Per week

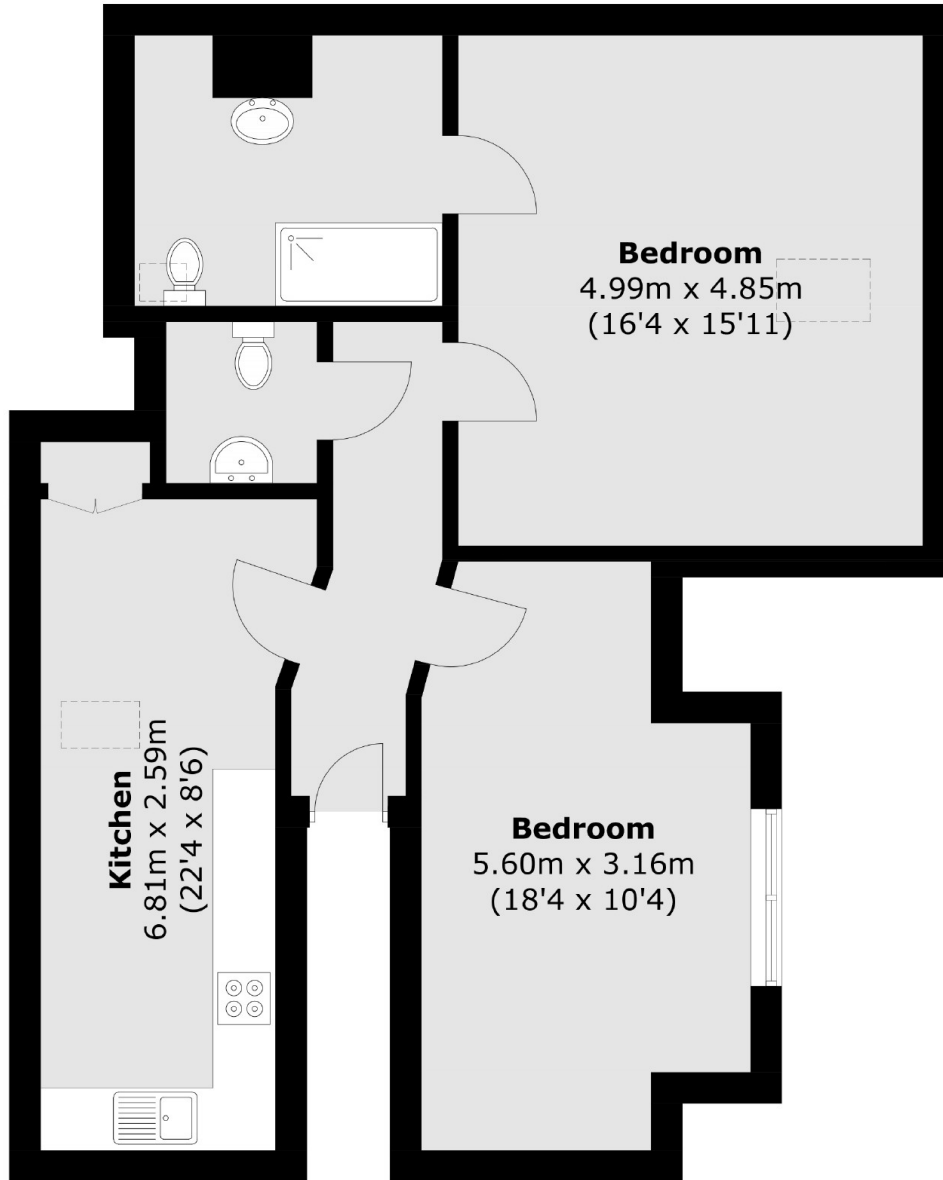
Impeccable newly built one-bedroom flat, finished to the highest standard. The property includes an additional W/C, providing modern comfort in a stylish and well-designed space.

Well located, just under a mile away from West Ealing station and also just over a mile from Northfields station. Also ideally located for the local parks and shopping facilities of West Ealing's Broadway.

Features

Newly Built
One Bedrooms
Additional W/C
Private Garden
Close to Station
Top Floor

Coldershaw Road,
London, W13



Second Floor

Total area (approx.): 70.0 sq. m (753.5 sq. ft)