



Jefferson Close, W13

£340,000

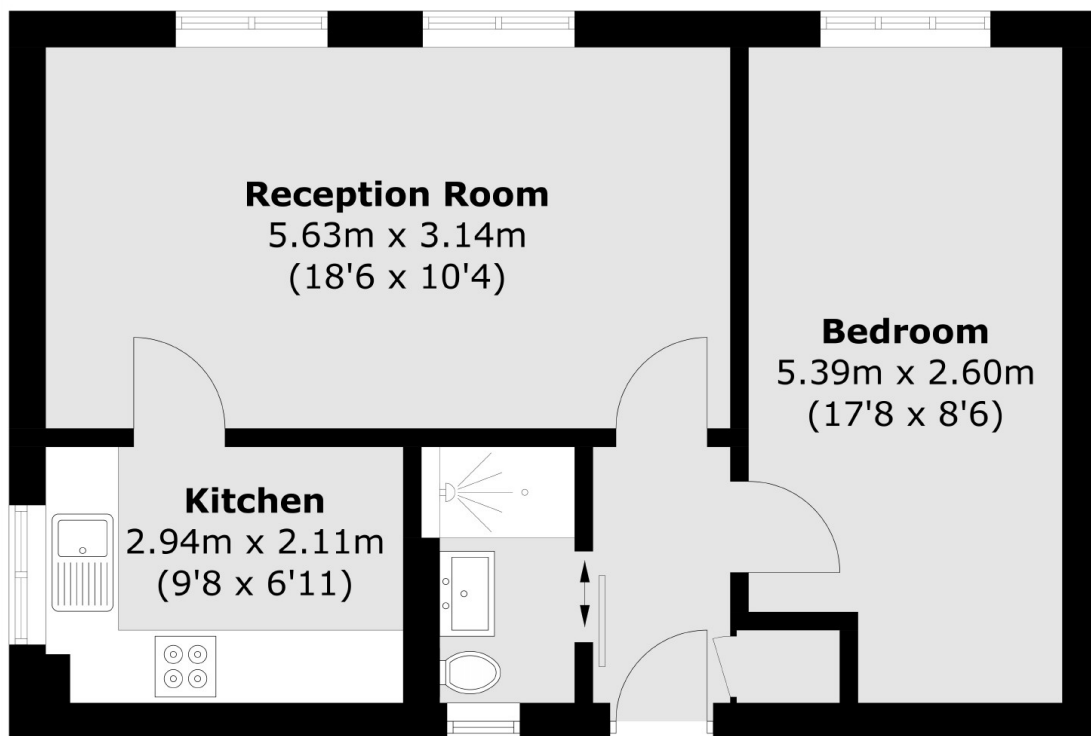
Ground floor apartment located in this quiet well maintained development close to Northfields.

Offered in excellent condition with modernised kitchen and shower room. Also benefits from allocated parking and long lease. Viewing comes highly recommended.

Features

- Ground Floor Apartment
- Excellent Condition
- Off Street Parking
- Long Lease
- Close to Tube
- Quiet Location

Jefferson Close,
London, W13



Total area (approx.): 45.3 sq. m (487.6 sq. ft)