



Windermere Road, W5 £465,000

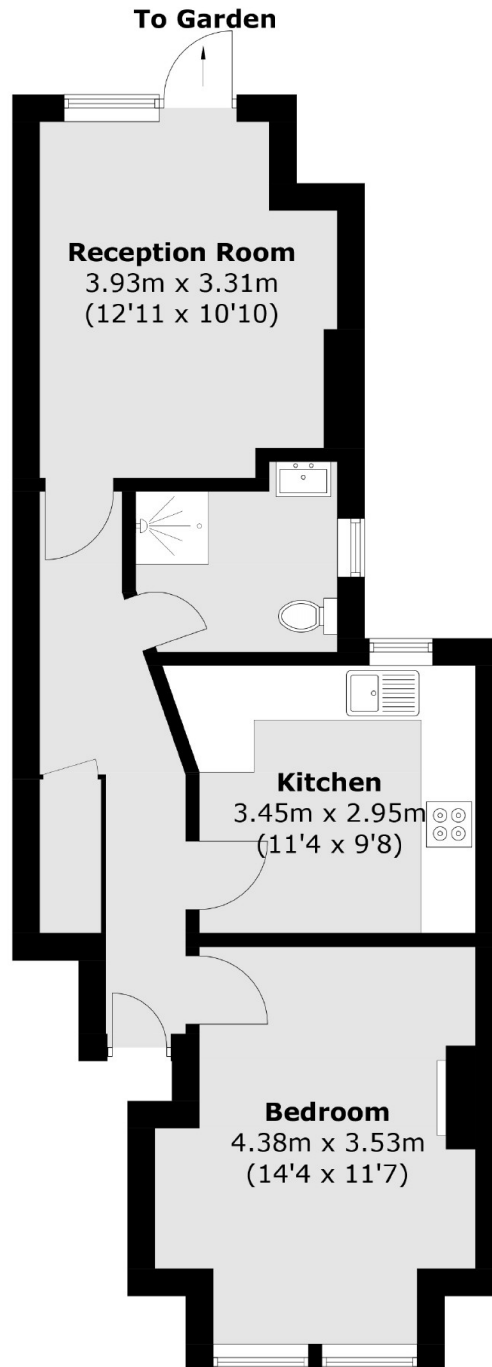
Garden flat set in this excellent Northfields location backing onto the open spaces of Lammas Park. The adaptable accommodation is well presented and offers a spacious living room, well fitted kitchen, double bedroom and modern bathroom.

Many neighbouring properties have been extended to the rear. Offered with share of freehold, viewing is highly recommended.

Features

- Share of Freehold
- Overlooks Lammas Park
- Great Garden
- Close to Tube
- Modern Kitchen
- Period Features

Windermere Road,
London, W5



Total area (approx.): 48.3 sq. m (519.9 sq. ft)