



## Murray Road, W5

£425,000

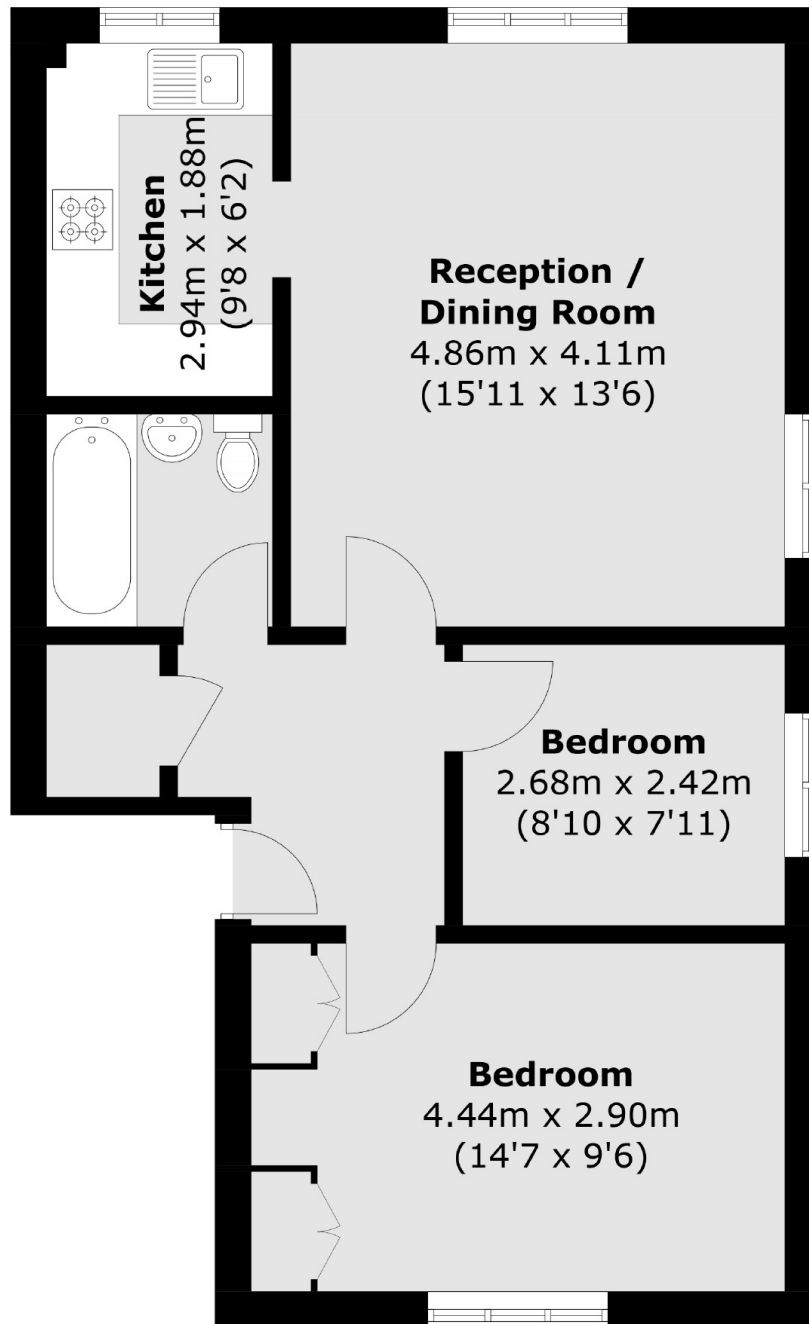
A well presented two bedroom flat set within this well maintained development in South Ealing. Located on the first floor, the property also comprises entrance hall with storage, spacious Living room with dual aspect modern fitted kitchen and bathroom.

Benefits from long lease and located close to shops and transport links including South Ealing Piccadilly Line tube.

### Features

- First Floor Flat
- Two Bedrooms
- Good Transport Links
- Long Lease
- Close to Tube
- No Onward Chain

Murray Road,  
London, W5



Total area (approx.): 57.0 sq. m (613.5 sq. ft)

**Dexters**

Northfields  
140 Northfield Avenue  
London  
W13 9SB  
Sales  
020 8545 8588

Energy Rating: . We aim to make our particulars both accurate and reliable. However they are not guaranteed; nor do they form part of an offer or contract. If you require clarification on any points then please contact us, especially if you're traveling some distance to view. Please note that appliances and heating systems have not been tested and therefore no warranties can be given as to their good working order.

 **RICS** | Regulated  
Estate Agent  
and Letting Agent

dexters.co.uk