



Elthorne Avenue, W7

£550,000

Impressive two bedroom conversion flat occupying the two upper floors of this well maintained building. Offering over 800 sq.ft 175 sqm of stylish living space which enjoys a high standard of fixtures and decoration.

Located in this favoured street close to Elthorne Park and the Piccadilly line stations for both Boston Manor and Northfields, the Elizabeth line at West Ealing is also within reach.

Features

- Two Bedrooms
- Split Level
- Over 800 Sq. Ft
- Excellent Condition
- Close to Transport
- Long Lease



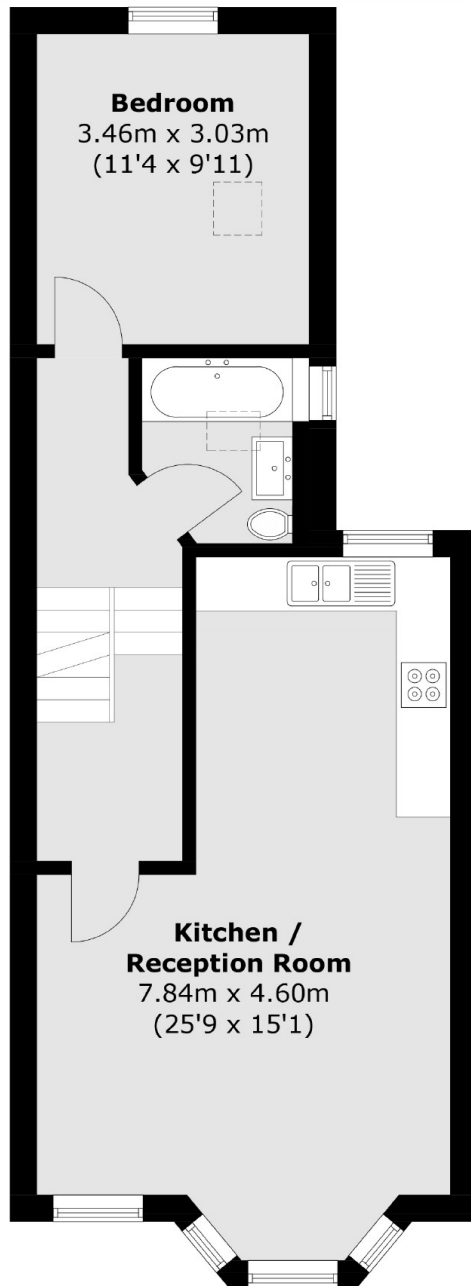
Elthorne Avenue, W7

This fantastic conversion flat is ideal for a purchaser looking for a home they can move straight into and unpack. The first floor landing leads to the rear aspect second bedroom, the well fitted bathroom and the highly impressive 25 ft open plan kitchen/reception room. On the second floor, you will find the main bedroom with it's Ensuite shower room.

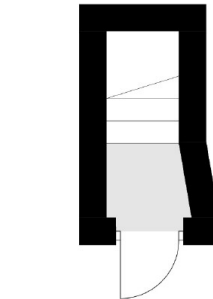
Elthorne Avenue is a well regarded street with an interesting mix of character Victorian buildings. Adjacent to the vast open spaces of Elthorne Park and nicely positioned for Boston Manor and Northfields (Piccadilly line) and the Elizabeth line at West Ealing. Viewing comes highly recommended.



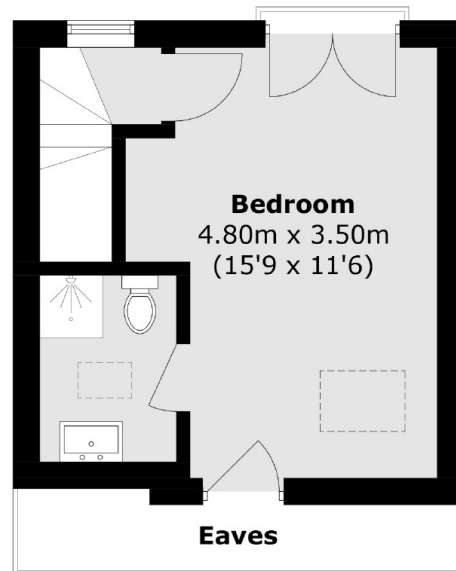
Elthorne Avenue,
London, W7



First Floor



Ground Floor



Second Floor

Total area (approx.): 74.7 sq. m (803.9 sq. ft)
(Excluding Eaves)