



Coningsby Road, W5

£800,000

Impressive double fronted Victorian house located in this favoured location close to Walpole Park. Well presented throughout, this home successfully combines period character features with modern conveniences.

Located in a great spot just moments from the gates at Walpole Park and a short stroll to South Ealing Picadilly line station, with both Northfields and Ealing Broadway easily accessible.

Features

- Double Fronted House
- Victorian
- Three Bedrooms
- Two Reception Rooms
- Planning for Extension
- Enviably Location



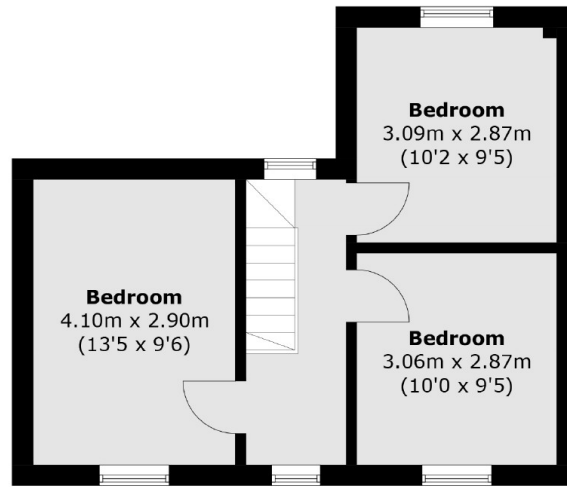
Coningsby Road, W5

On arrival you will be impressed with this double fronted Victorian house on this quiet residential street. The smart front door leads through to the hallway and the two front reception rooms to the left and right. On the left hand side, you are lead through to the well fitted modern kitchen and a lobby to the modernised bathroom. Upstairs there are three good sized bedrooms. Many benefits to note include the well landscaped private rear garden.

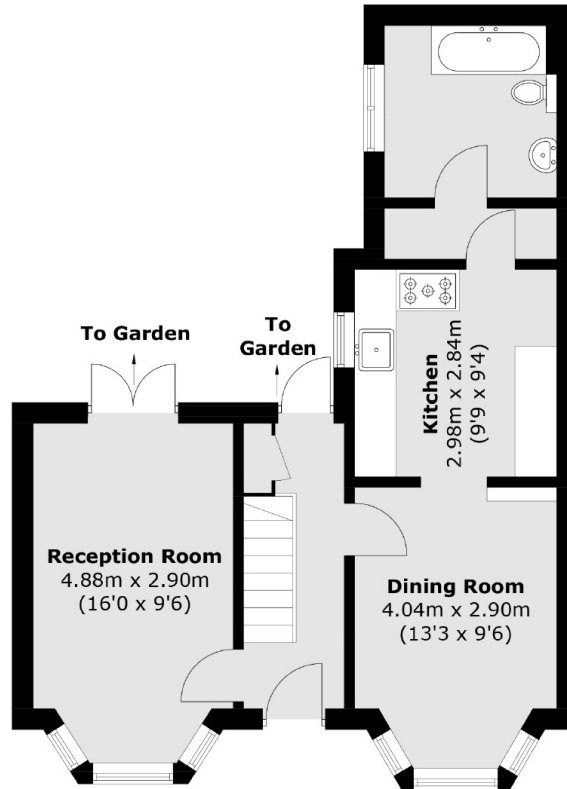
Located in a great spot just moments from the gates at Walpole Park and a short stroll to South Ealing Picadilly line station, with both Northfields and Ealing Broadway easily accessible.



Coningsby Road,
London, W5



First Floor



Ground Floor

Total area (approx.): 86.1 sq. m (926.8 sq. ft)