



Townholm Crescent, W7

£725,000

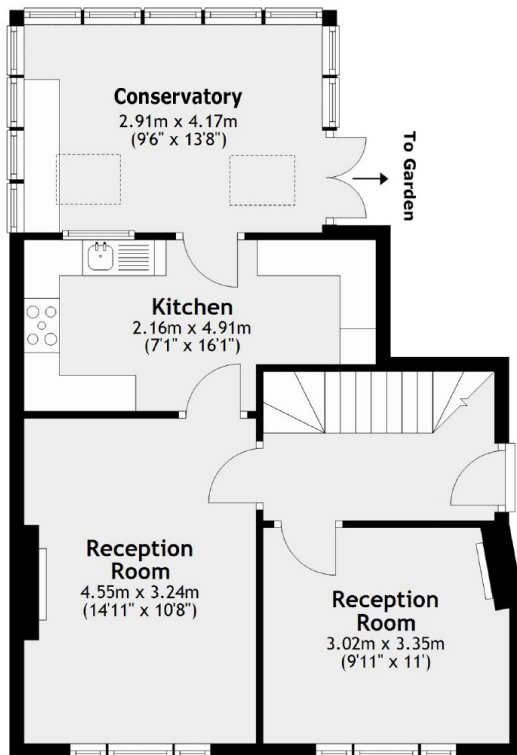
This impressive semi detached house is set on a large plot with off street parking and a superb garden. Smartly presented throughout with a high standard of fixtures and decoration.

Located in an increasingly popular area close to outstanding schools including Elthorne Park High School and both the Piccadilly line at Boston Manor and the Elizabeth line at Hanwell.

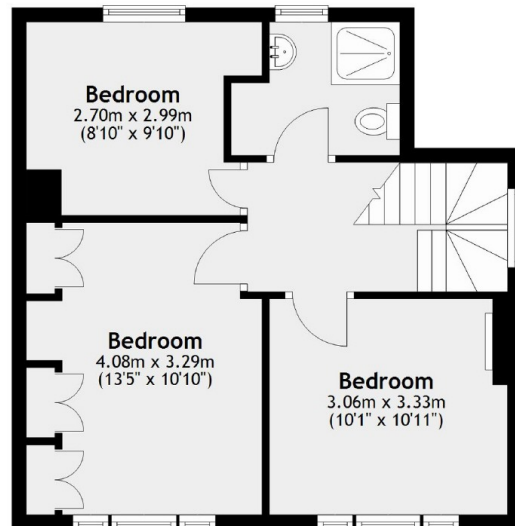
Features

Semi detached
Three bedrooms
Immaculate condition
Off Street Parking
Fantastic Condition
Excellent Schools

Townholm Crescent, London, W7



Ground Floor



First Floor

Total area: approx. 99.5 sq. metres (1071.4 sq. feet)