



## Mayfield Avenue, W13

£650,000

A very stylish two garden flat situated in the heart of Northfields. Enjoys an abundance of natural light and a very high standard of fixtures throughout.

Ideal for a purchaser who is looking for a home that they can simply move into and unpack.

There are too many features to list here so come and view and we'll talk you through them.

### Features

- Two Bedroom
- Garden Flat
- Excellent Condition
- Two Bathrooms
- No Onward Chain
- Share of Freehold



## Mayfield Avenue, W13

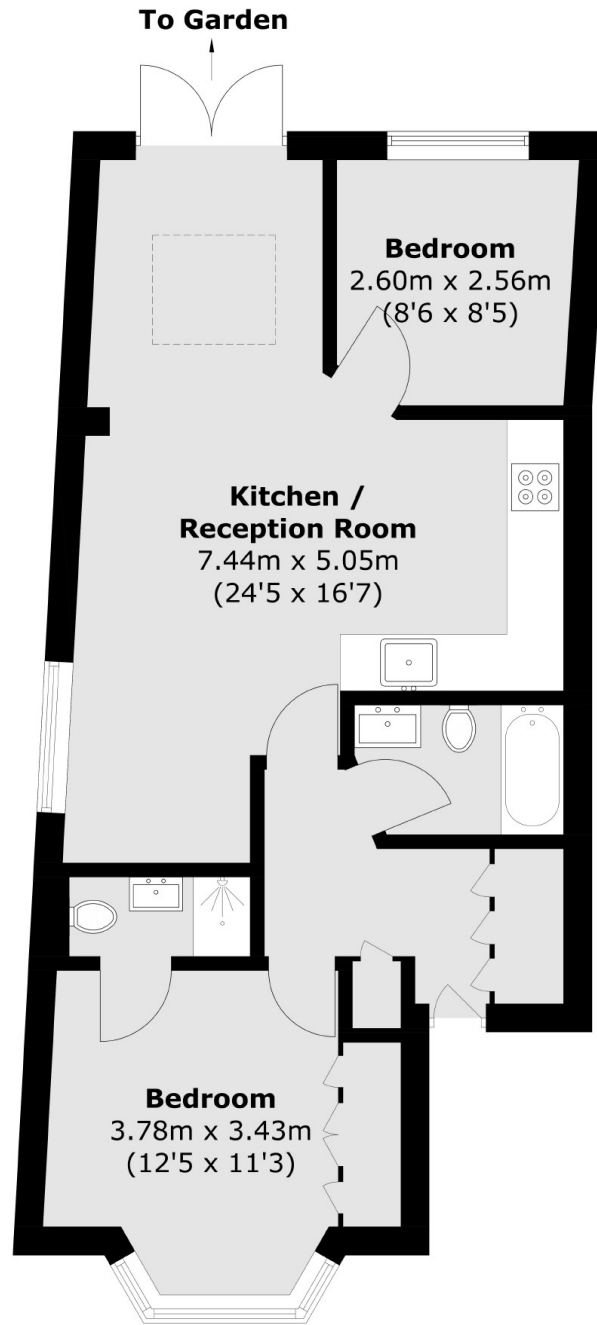
Situated on the corner of Northcroft Road which means there is lots of natural light and side access for off street parking. We love the large open plan living room onto the kitchen which opens onto the garden and is an impressive space to entertain your guests in.

The main bedroom has an ensuite shower room in addition to the main bathroom. Located in a sought after spot close to the shops, bars and Cafés of Northfields with easy access to the Piccadilly line tube as well as the Elizabeth line of West Ealing.





Mayfield Avenue,  
London, W13



## Ground Floor

Total area (approx.): 56.4 sq. m (607.1 sq. ft)

**Dexters**

Northfields  
140 Northfield Avenue  
London  
W13 9SB  
Sales  
020 8545 8588

Energy Rating: C. We aim to make our particulars both accurate and reliable. However they are not guaranteed; nor do they form part of an offer or contract. If you require clarification on any points then please contact us, especially if you're traveling some distance to view. Please note that appliances and heating systems have not been tested and therefore no warranties can be given as to their good working order.

 **RICS** | Regulated  
Estate Agent  
and Letting Agent

[dexters.co.uk](http://dexters.co.uk)