



## Radbourne Avenue, W5

£525,000

This is a must see two bedroom ground floor flat with a private garden.

Well located close to local shops and Piccadilly line tube at both Northfields and South Ealing.

### Features

- Two Bedroom Flat
- Private Garden
- Share of Freehold
- Close to Tube
- Good Condition
- Sought After Location



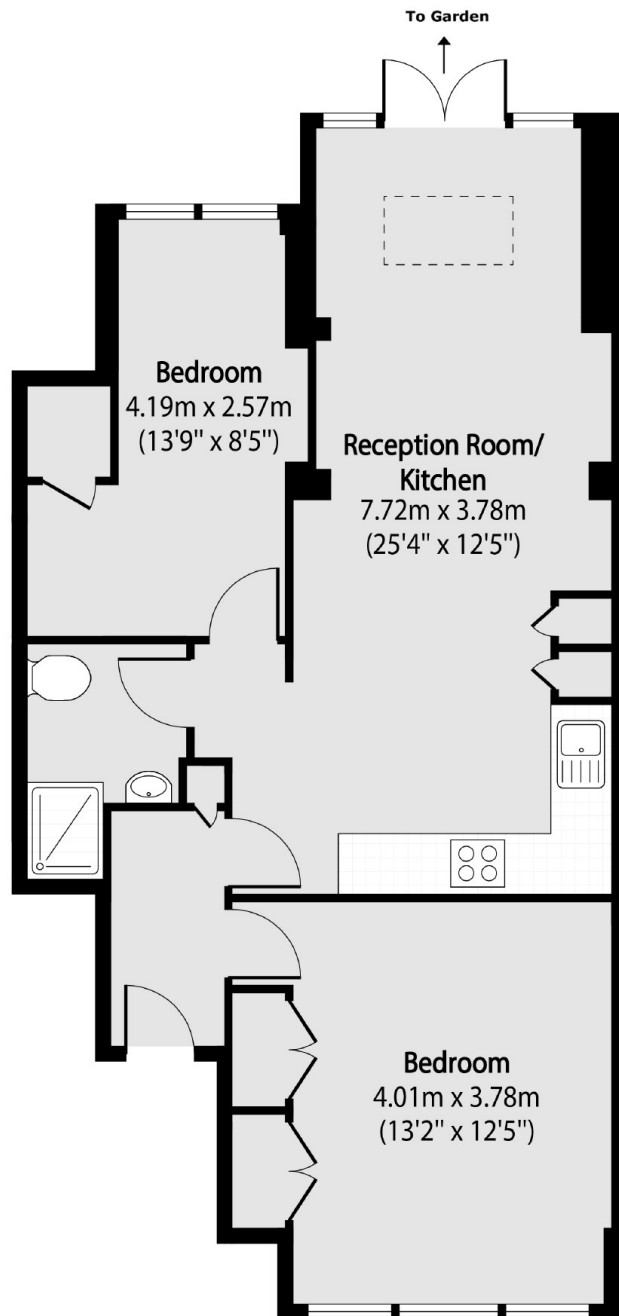
## Radbourne Avenue, W5

You will find the building on the West side of the street. The communal entrance leads through to a lobby and the impressive open plan kitchen living room with double doors to the private rear garden.

The good sized main bedroom is to the front with the second bedroom overlooking the garden. There is also a well fitted shower room. Well presented throughout and benefitting from a long lease, early viewing is recommended.



Radbourne Avenue,  
London, W5



Total area (approx): 57.23 sq m (616 sq. ft)