



Dormers Rise, UB1

£400,000

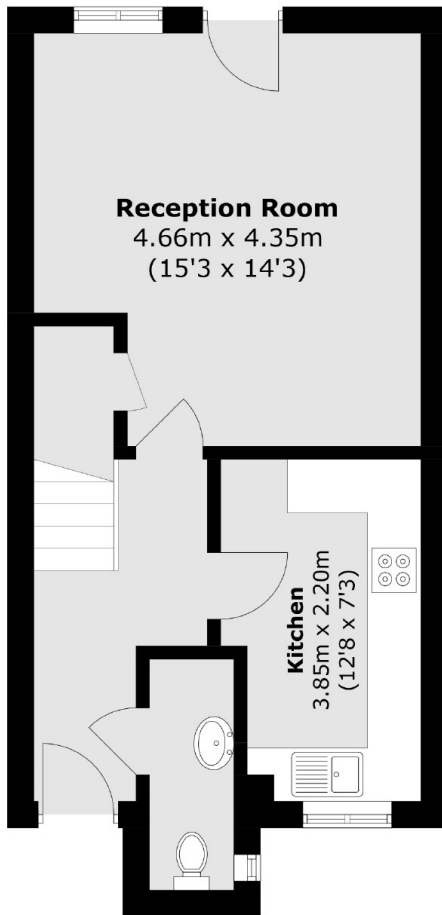
This two bedroom leasehold house offers over 800 sq ft/76 sq m of accommodation. Benefits to note include a downstairs WC, off street parking and a good sized rear garden. Perfect for both rental investors and first-time buyers.

Ideally positioned near Cardinal Wiseman & Our Lady of Visitation, with easy access to Greenford Broadway's shopping facilities and restaurants.

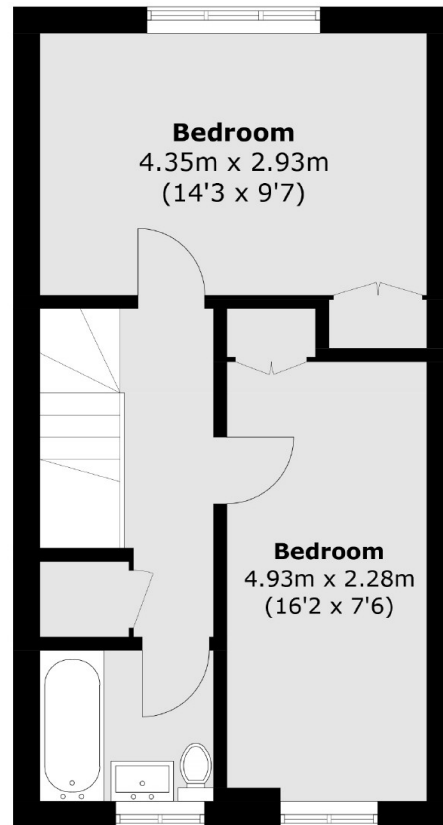
Features

- Leasehold
- Two Bedroom
- Over 800 sq ft/76 sq m
- Off Street Parking
- Rear Garden
- Rental Investment

Dormers Rise, Southall, UB1



Ground Floor



First Floor

Total area (approx.): 76.4 sq. m (822.3 sq. ft)