



## Denman Avenue, UB2

£369 Per week

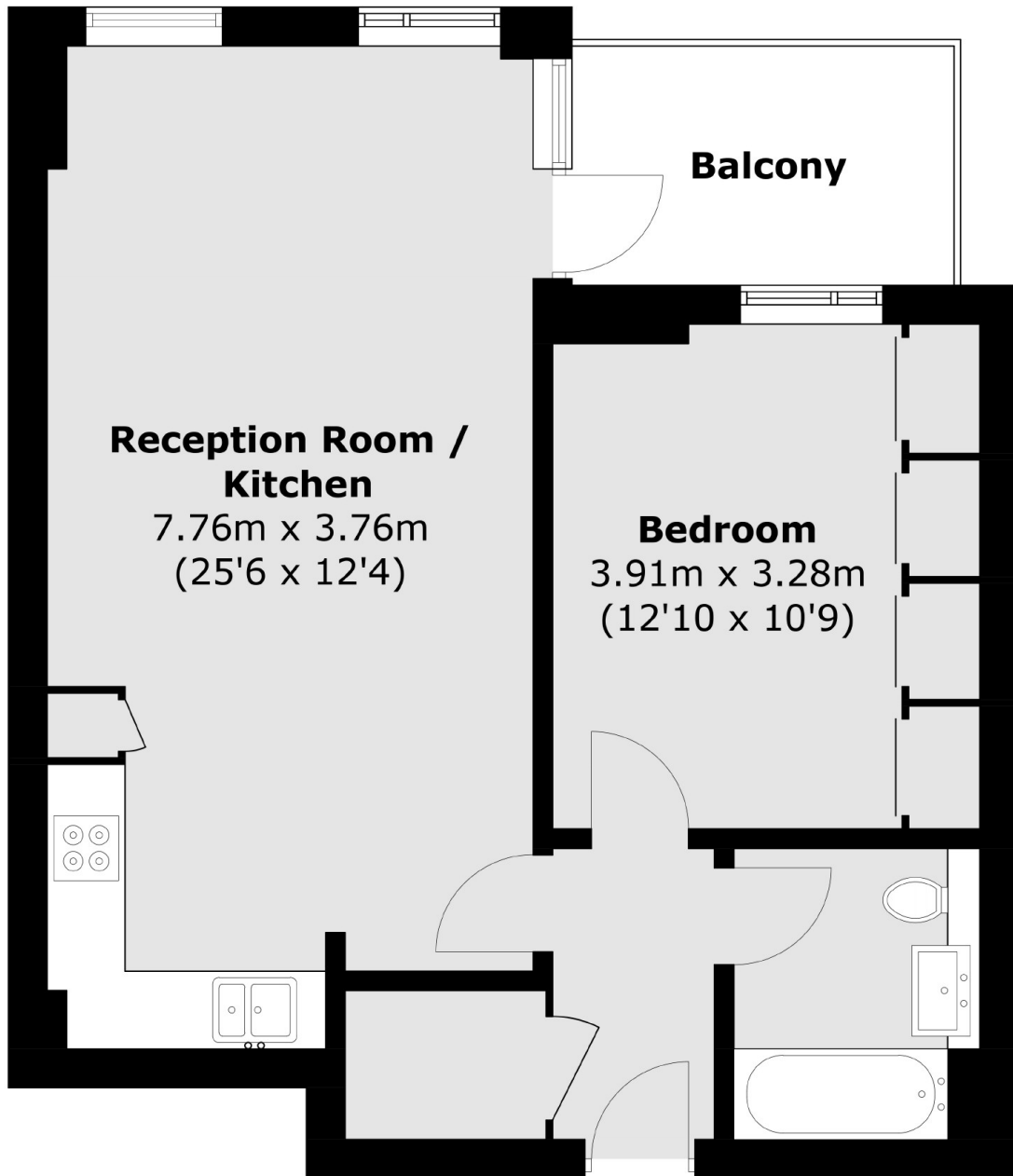
A one bedroom apartment in this exciting new development. It is ideal for access to Ealing Hospital, with a modern finish throughout and includes a large private balcony.

Located close to Ealing Hospital with bus links for easy access into Boston Manor station (Piccadilly Line) and Ealing Broadway station (Central and District Line)

### Features

- One Bedroom
- New Build
- Open-Plan Reception
- Balcony
- Close to Hospital
- Unfurnished

Denman Avenue,  
Southall, UB2



Total area (approx.): 52.1 sq. m (560.8 sq. ft)  
Balcony area : 5.4 sq. m (58.1 sq. ft)

**Dexters**

Northfields  
140 Northfield Avenue  
London  
W13 9SB  
Lettings  
020 8545 8589

Energy Rating: B. We aim to make our particulars both accurate and reliable. However they are not guaranteed; nor do they form part of an offer or contract. If you require clarification on any points then please contact us, especially if you're traveling some distance to view. Please note that appliances and heating systems have not been tested and therefore no warranties can be given as to their good working order.

 **RICS** Regulated  
Estate Agent  
and Letting Agent

dexters.co.uk