



Murray Road, W5

£835,000

This three bedroom, halls adjoining Victorian house is set on the South side of this popular street. We love the long sunny garden and it is offered with no onward chain. With potential to extend, it is well worth a look.

Situated in an increasingly popular residential area close to an excellent range of schools and transport links including Brentford Station for Waterloo and Northfields for the Piccadilly line. A home of real warmth and charm with a great garden, viewing is highly recommended.

Features

- Victorian House
- Halls Adjoining
- South Facing Garden
- Scope to Extend
- Close to Schools
- No Onward Chain



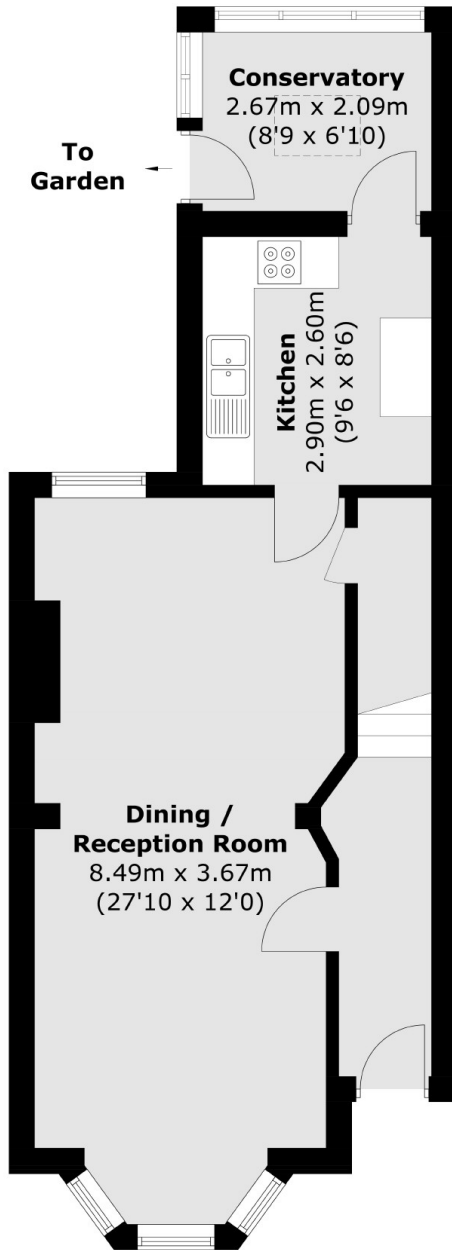
Murray Road, W5

On arrival you will be impressed with the front of this bay windowed house on the South side of the road. The entrance hall leads through to the two interconnecting reception rooms which enjoy a dual aspect and high ceilings. Beyond this are the fitted Kitchen and a Conservatory which looks out onto the garden.

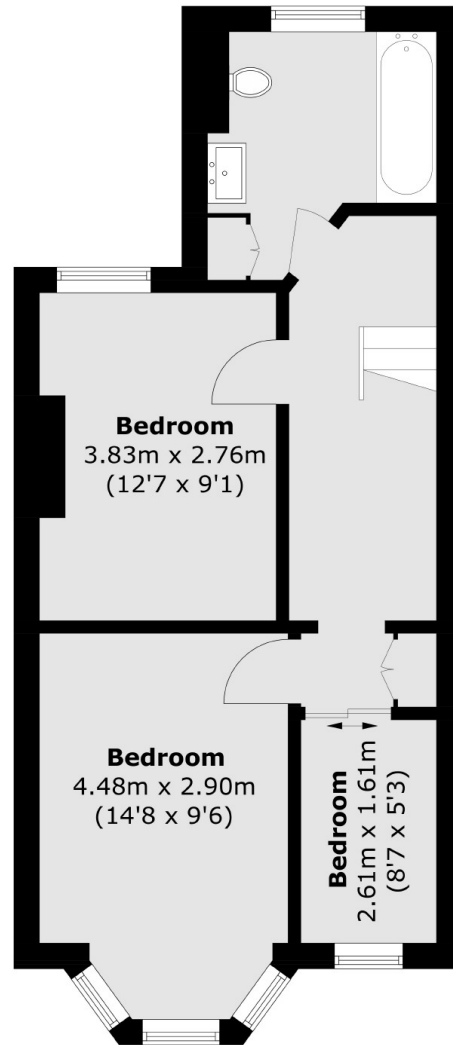
Upstairs there are two double bedrooms, a single bedroom, and the large bathroom. Many similar neighbouring houses have been extended to the loft and rear so there is room to grow with the family.



Murray Road,
London, W5



Ground Floor



First Floor

Total area (approx.): 95.4 sq. m (1,026.9 sq. ft)