



Townholm Crescent, W7 £685,000

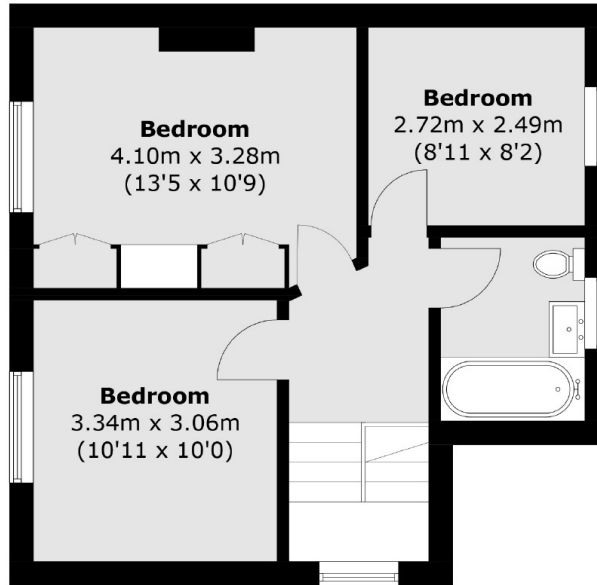
This well presented three bedroom semi-detached house has plenty of scope to extend, making this an excellent family home with plenty of room to grow. We particularly love the big South facing garden which backs directly onto Elthorne Park.

Set in an increasingly popular area between Boston Manor Station (Piccadilly line) and Hanwell (Elizabeth line) with plenty of local shops and Ofsted outstanding Schools including Oaklands Primary and Elthorne Park High School.

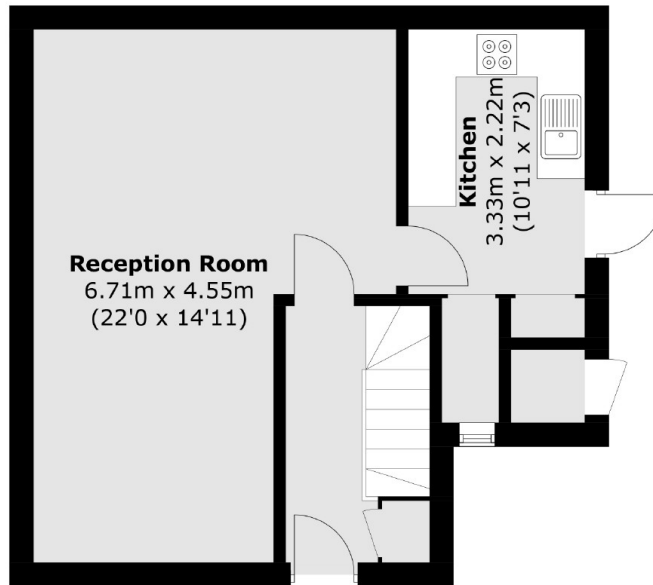
Features

- Semi Detached
- Three Bedrooms
- Off Street Parking
- South Facing Garden
- Outstanding Schools
- Scope to Extend

Townholm Crescent, London, W7



First Floor



Ground Floor

Total area (approx.): 85.1 sq. m (916.0 sq. ft)
Outside Cupboard (approx.): 0.8 sq. m (8.6 sq. ft)