



## Burnham Way, W13

£499,950

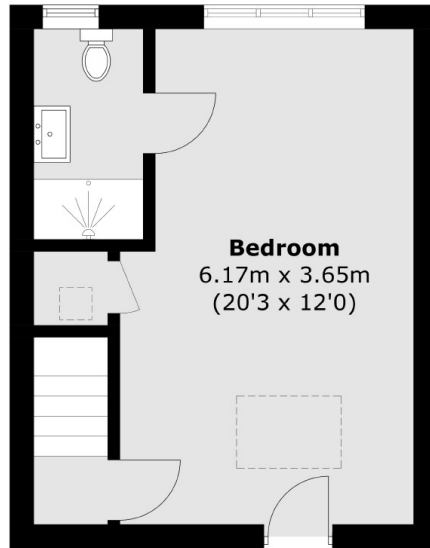
This split level maisonette occupies the two upper floors of this converted building. Offers over 750 sq. Ft of living space with two double bedrooms (main with ensuite shower room), main bathroom and open plan kitchen/ reception room. Benefits from long leasehold and off street Parking and no onward chain.

Located in this convenient location just a short walk from Boston Manor Station ( Piccadilly line) with the interesting mix of local and independent shops on Northfields Avenue and a multiple choice of Parks also within easy reach. Viewing comes highly recommended.

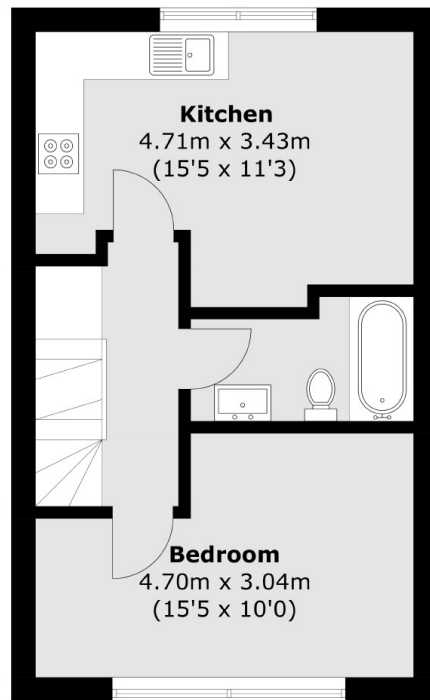
### Features

- Split Level Conversion
- Two Double Bedrooms
- Off Street Parking
- Ensuite Shower room
- Long Lease
- No Onward Chain

Burnham Way,  
London, W13



**Second Floor**



**First Floor**



**Ground Floor**

Total area (approx.): 69.7 sq. m (750.3 sq. ft)