

Lawrence Road, W5

£425,000

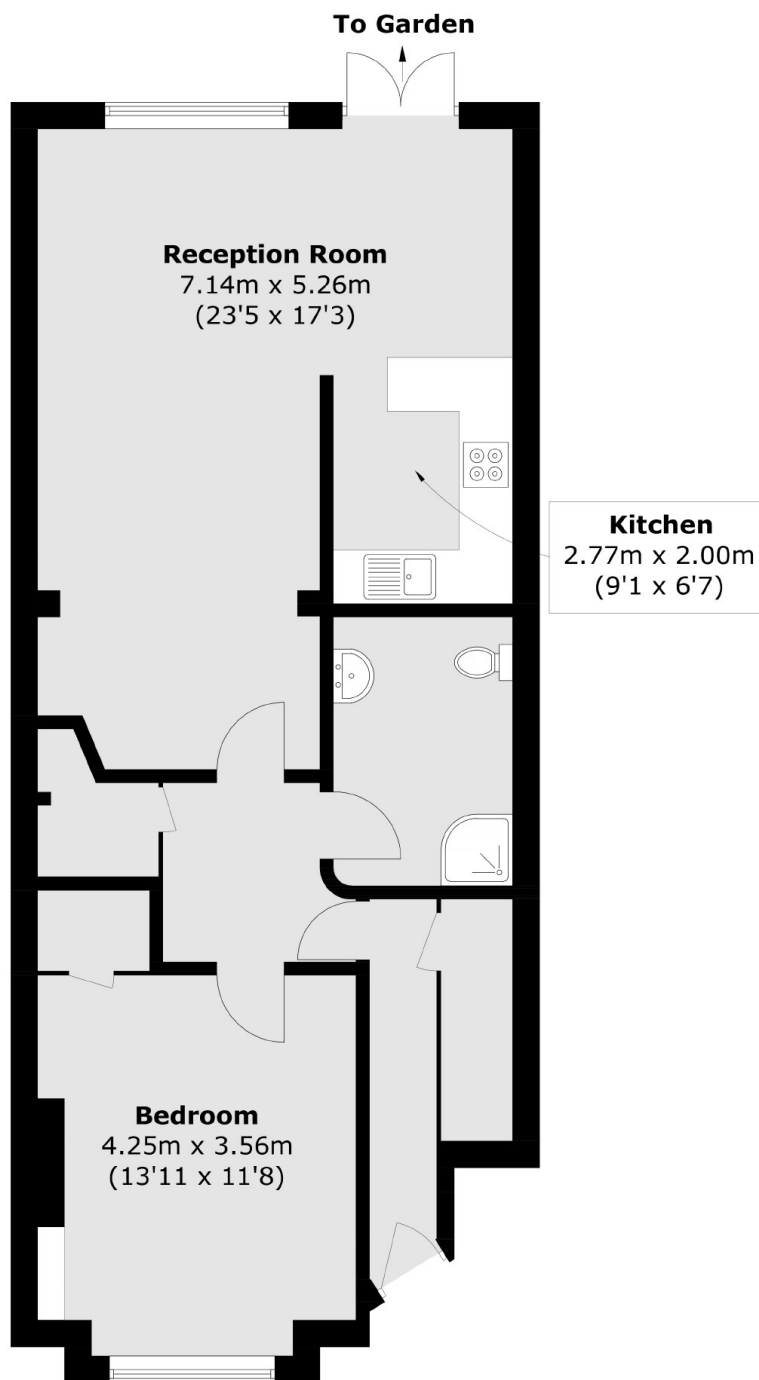
This is an excellent ground floor maisonette which offers circa 750 sq.ft. / 70 Sq. m of accommodation. Benefits from a long lease and direct access to a private South facing garden.

Convenient location close to an array of local shops and Piccadilly line tube at both South Ealing and Northfields with Brentford Station for Waterloo also within reach. Offered with no onward chain.

Features

- Garden Flat
- South Facing Garden
- Spacious accommodation
- Close to tube
- Long lease
- No onward chain

Lawrence Road,
London, W5



Total area (approx.): 69.4 sq. m (747.0 sq. ft)