



## Princes Road, W13

£375,000

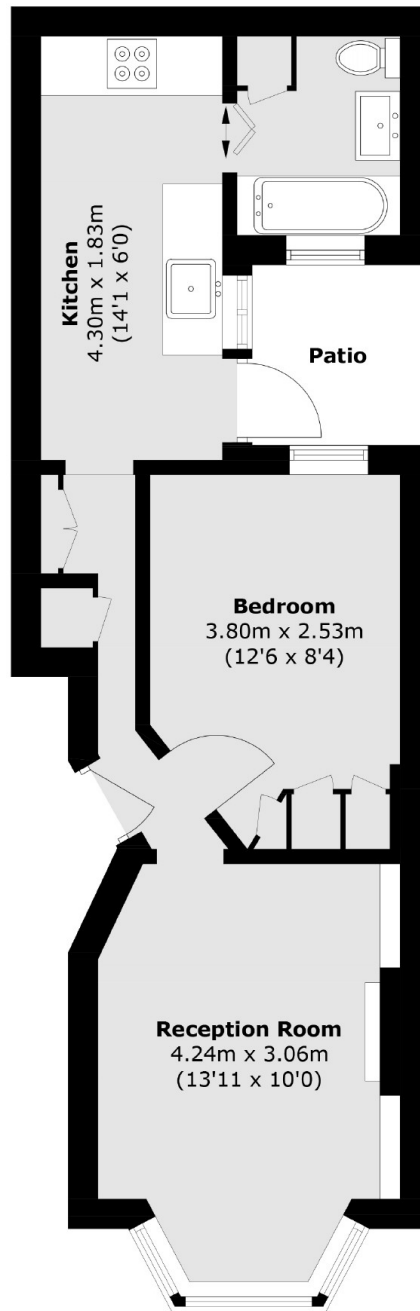
This is a brilliant garden flat occupying the ground floor of this converted period building. Offered in excellent condition with a high standard of fixtures and decoration and we love the stylish presentation. Entrance hall, bay window front reception, double bedroom and well fitted kitchen and bathroom. There is also a secluded courtyard garden.

Situated in a great spot close to Walpole park and within walking distance of a huge range of transport and shopping options at Ealing Broadway, Northfields and West Ealing.

### Features

- Garden Flat
- Excellent condition
- Long lease
- Close to Parks
- Multiple transport options
- No onward chain

Princes Road,  
London, W13



Total area (approx.): 36.4 sq. m (391.8 sq. ft)  
Patio: 3.2 sq. m (34.4 sq. ft)

**Dexters**

Northfields  
140 Northfield Avenue  
London  
W13 9SB  
Sales  
020 8545 8588

Energy Rating: C. We aim to make our particulars both accurate and reliable. However they are not guaranteed; nor do they form part of an offer or contract. If you require clarification on any points then please contact us, especially if you're traveling some distance to view. Please note that appliances and heating systems have not been tested and therefore no warranties can be given as to their good working order.

 **RICS** | Regulated  
Estate Agent  
and Letting Agent

[dexters.co.uk](http://dexters.co.uk)