



## Convent Gardens, W5

£725,000

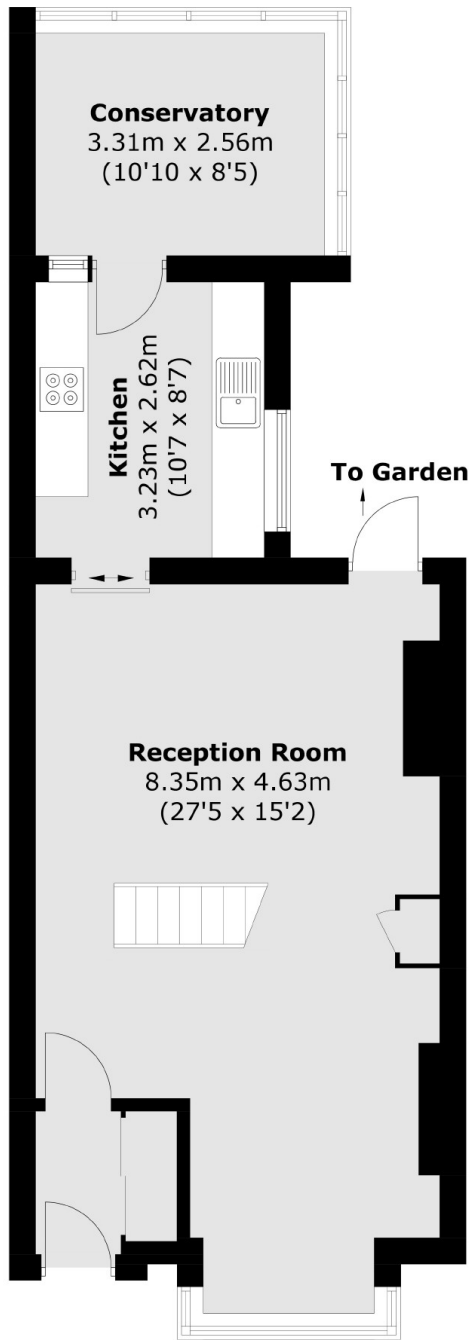
Two bedroom end of terrace house which is priced to reflect the need for updating. Offering 979 sq ft of living space, it features two spacious double bedrooms and a family bathroom on the first floor. The ground floor comprises a through-lounge reception area and galley kitchen. Additionally, the property holds significant potential for expansion into the loft and at the rear, a south facing garden and is offered chain free.

Conveniently located for Northfields Underground station along with the amenities of its high street, good schools catchment including Little Ealing and Ealing Fields. The property further benefits from being a short walk to both Blondin and Boston Manor Park.

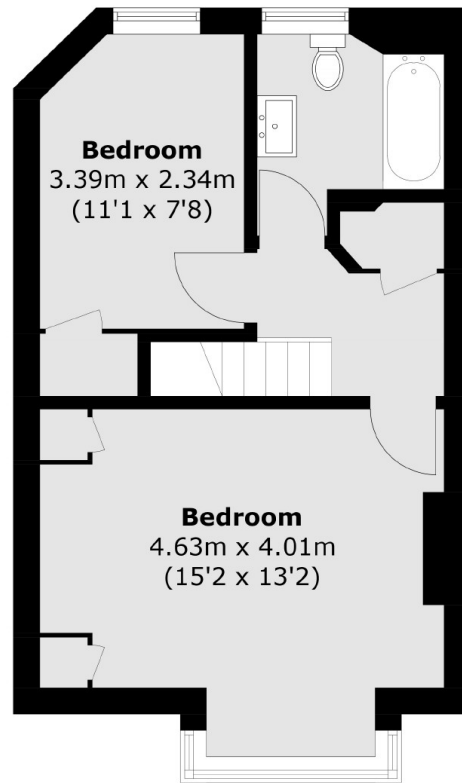
### Features

Freehold House  
Potential To Extend STP  
Two Double Bedrooms  
979 Square Feet  
South Facing Garden  
Chain Free

# Convent Gardens, London, W5



**Ground Floor**



**First Floor**

Total area (approx.): 91.0 sq. m (979.5 sq. ft)