



Hilda Road, UB2

£410,000

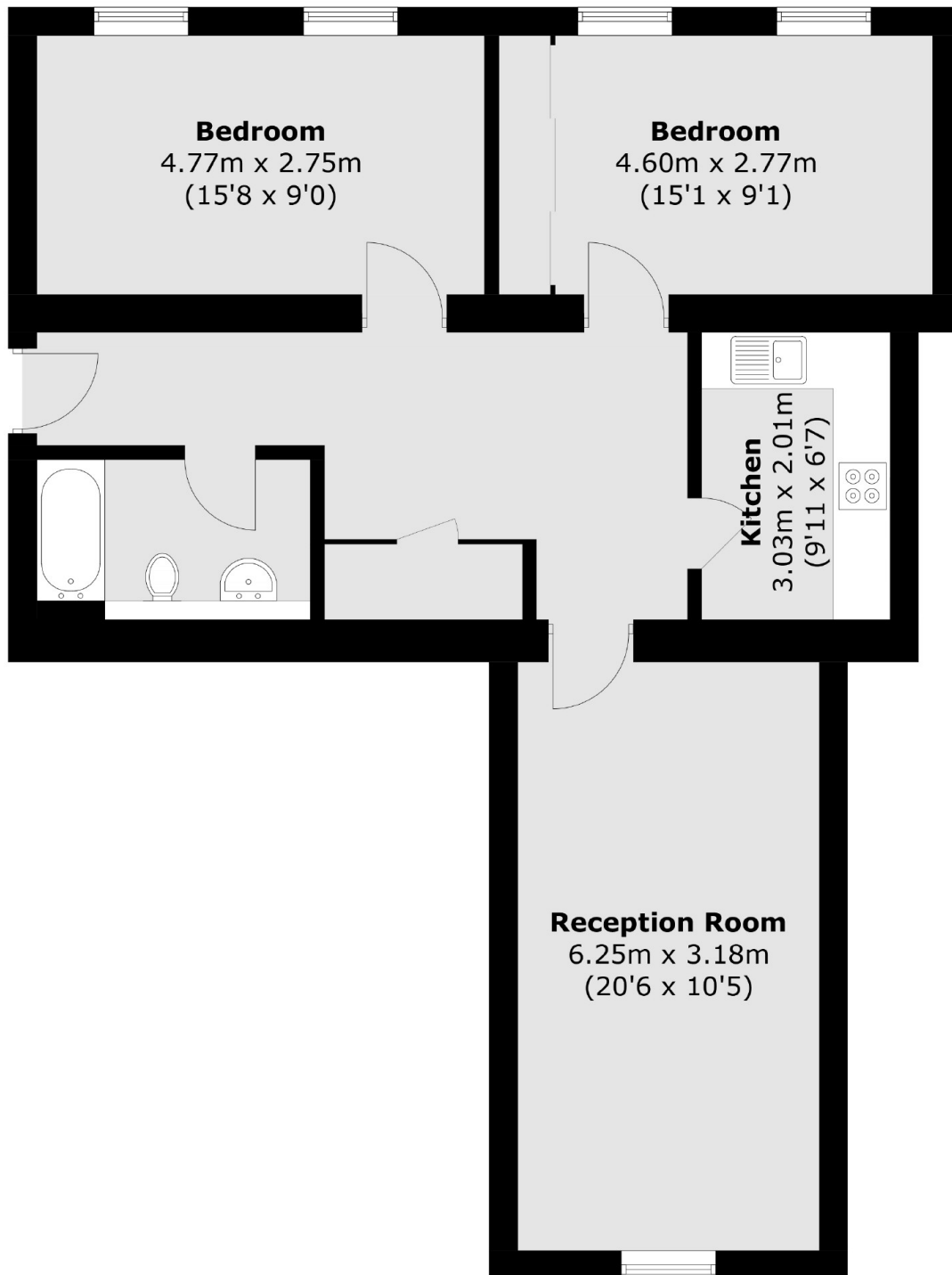
This top floor two double bedroom apartment in a period purpose built gated development offers 849.3 Square feet of living space. The property is set on the top floor of the building. The property is in great condition with a high spec kitchen, large living room and two double bedrooms. The property also comes with private parking and communal gardens

Located close to local shops, schools, amenities, Hanwell station and the Elizabeth Line. Further transport links provide easy access to Ealing and Greenford Underground and Heathrow.

Features

- OIEO £400,000
- Lift Access
- Private Parking
- Two Double Bedrooms
- Long Lease
- Modern Spec

Hilda Road,
Southall, UB2



Total area (approx.): 78.9 sq. m (849.3 sq. ft)