



Niagara Avenue, W5

£1,100,000

This impressive four bedroom home is set in a very popular location and is ideally located for fantastic schools, Northfields tube station and parks. There is a driveway for two cars, a south facing garden and benefits from no onward chain.

Features

- Four Bedrooms
- Off Street Parking
- No Onward Chain
- South Facing Garden
- Close To Tube
- Excellent School Catchment

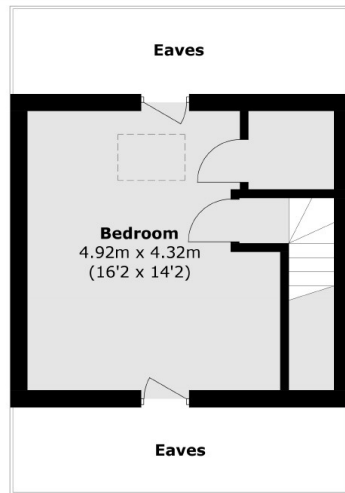


Niagara Avenue, W5

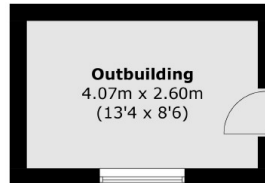
Niagara Avenue is a quiet cul-de-sac which leads to gates to the open space of Blondin Park. On arrival, you will find this impressive home on the south side of the street with off street parking for two cars. The wide reception hall leads to the front reception room and then onto the very bright and airy open plan Kitchen/Dining room/Reception with feature fireplace and also a useful downstairs shower room. On the two upper floors, there are three good sized double bedrooms and a single bedroom as well as the well fitted main bathroom. The rear garden has a sunny aspect and has a well built out building. Well presented throughout so ready for a purchaser to move straight into, in a great Northfields spot.



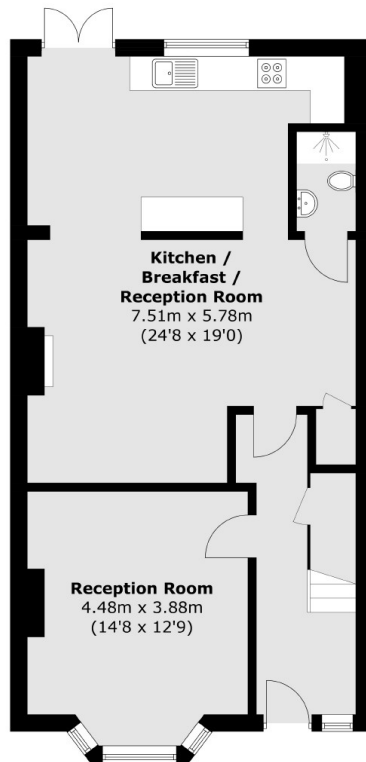
Niagara Avenue, London, W5



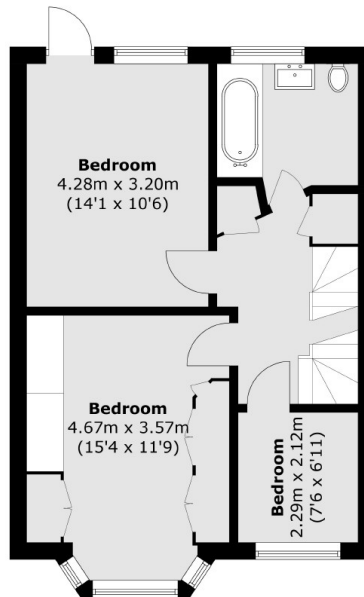
Second Floor



**(Not Shown In Actual
Location / Orientation)**



Ground Floor



First Floor

Total area (approx.): 145.7 sq. m (1,568.3 sq. ft)
Outbuilding: 10.7 sq. m (115.2 sq. ft)
(Excluding Eaves)