



## Hessel Road, W13

£835,000

This period house is offered to the market with no onward chain. With circa 1000 square feet of living space many neighbouring houses have been extended into the loft area. Recently refurbished so ready for a purchaser looking for a home they can just move into and unpack their bags.

The property is located within catchment for outstanding local schools and right in the heart of Northfields close to all amenities and within easy reach of both West Ealing Station (Elizabeth Line) and Northfields (Piccadilly Line) tube.

### Features

- Three Bedrooms
- Excellent school catchments
- Potential To Extend
- Private Garden
- New kitchen
- Chain Free



## Hessel Road, W13

Entrance hall, bay windowed front reception, modern fitted shower room, Dining room, newly fitted modern Kitchen and useful conservatory with the three bedrooms upstairs on the first floor. Many neighbouring houses have extended to the rear and loft areas.

Situated in a sought after location close to an excellent array of independent shops and cafés of Northfields (Piccadilly line) with West Ealing for the Elizabeth line also within reach.

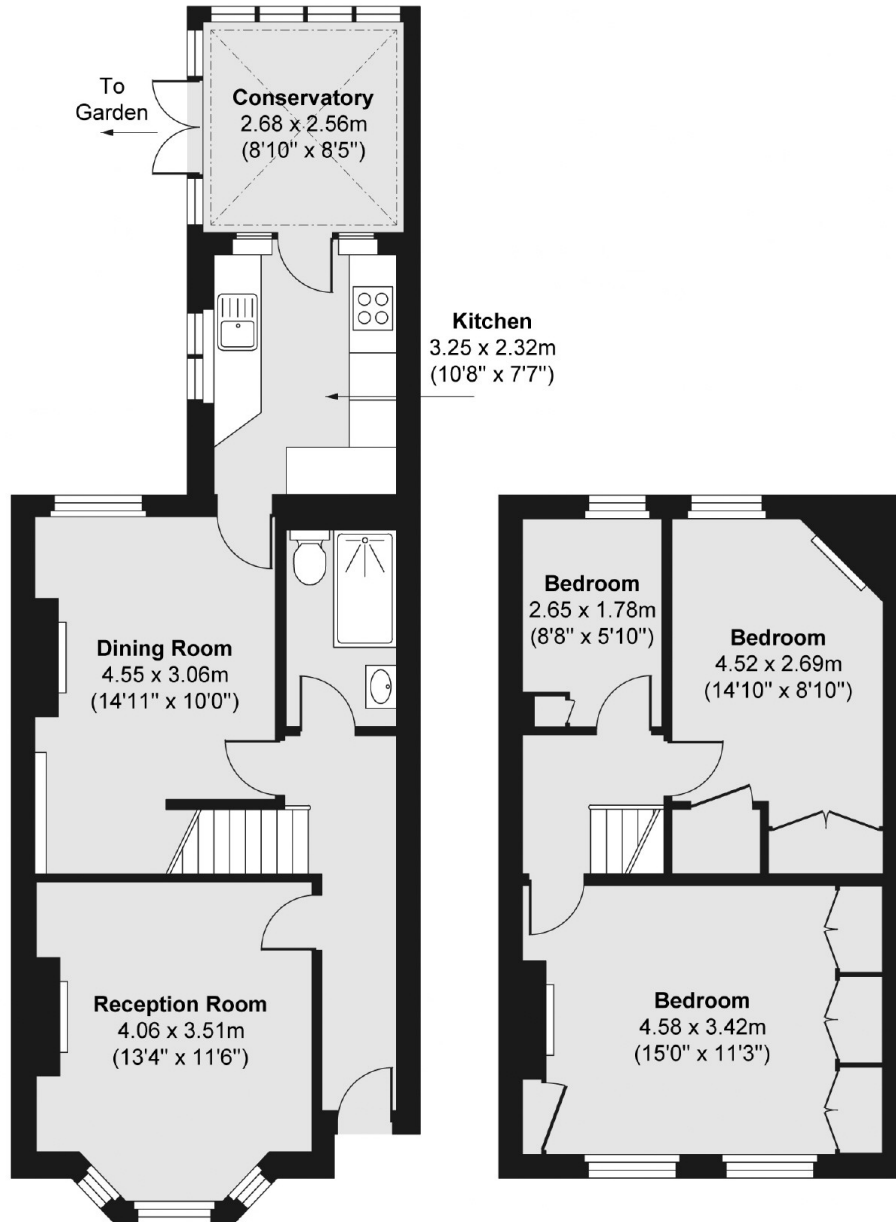




# Hessel Road, London, W13

Ground Floor

First Floor



Total area (approx.) 90.03 sq. m (969 sq. ft)