



Hessel Road, W13

£835,000

This period house is offered to the market with no onward chain. With circa 1000 square feet of living space many neighbouring houses have been extended into the loft area. Recently refurbished so ready for a purchaser looking for a home they can just move into and unpack their bags.

The property is located within catchment for outstanding local schools and right in the heart of Northfields close to all amenities and within easy reach of both West Ealing Station (Elizabeth Line) and Northfields (Piccadilly Line) tube.

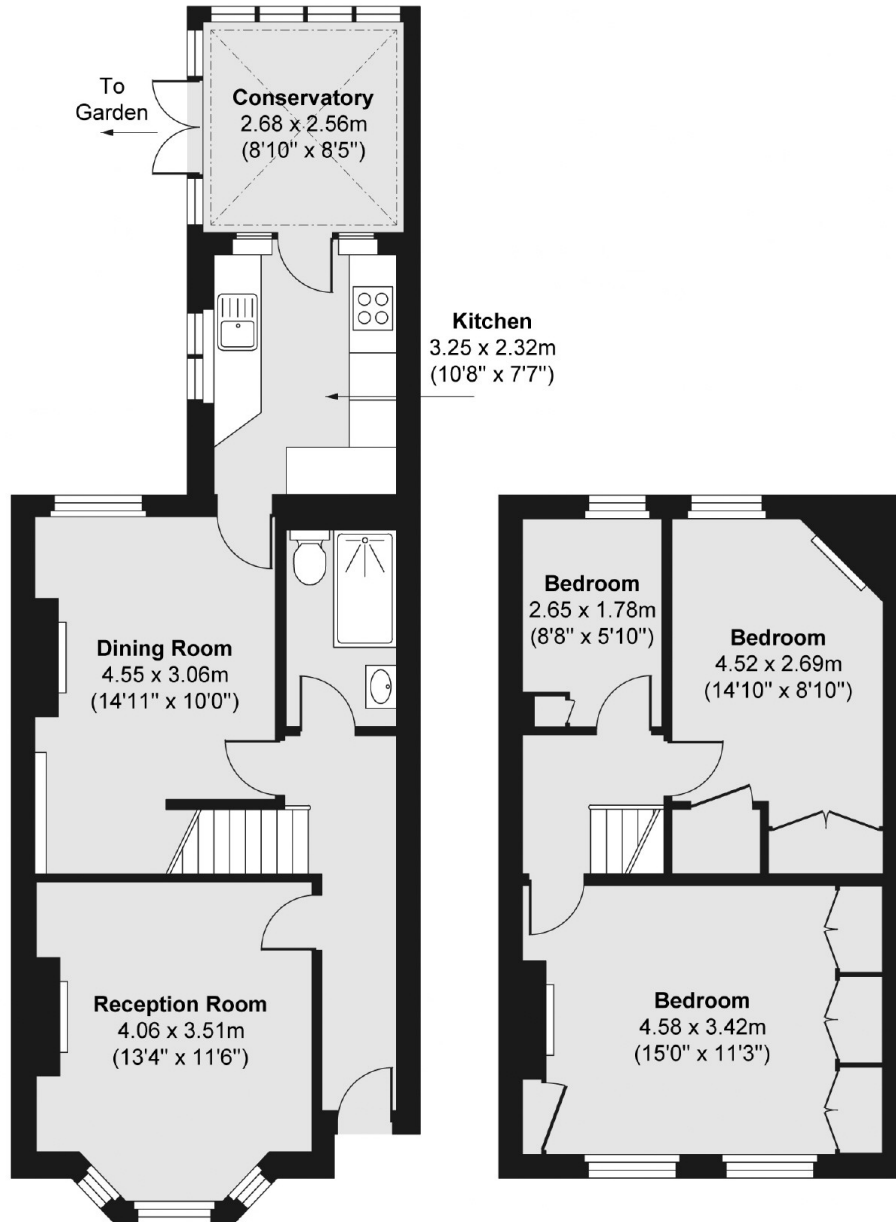
Features

- Three Bedrooms
- Excellent school catchments
- Potential To Extend
- Private Garden
- New kitchen
- Chain Free

Hessel Road, London, W13

Ground Floor

First Floor



Total area (approx.) 90.03 sq. m (969 sq. ft)