



## Salisbury Road, W13

£279,950

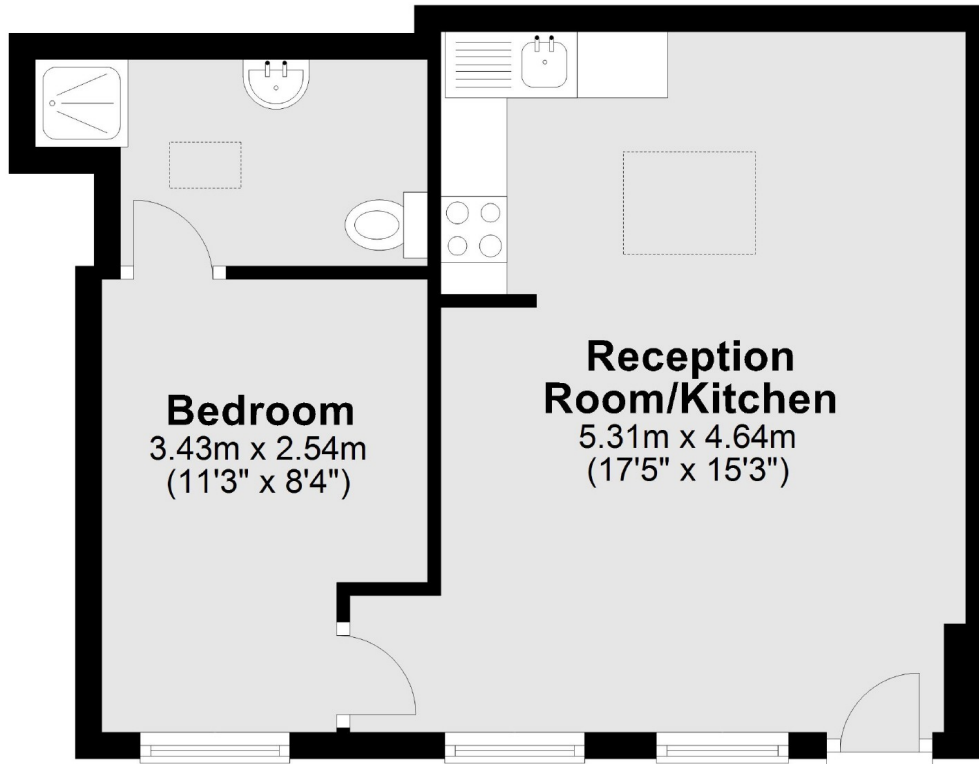
This one bedroom ground floor maisonette is offered with no onward chain and is situated in the heart of Northfields. Offered with a new long lease and ideal for a first time buyer or investment property.

### Features

- No Onward Chain
- New Long Lease
- Investment Opportunity
- Central Location
- Ground Floor
- Maisonette

Salisbury Road,  
London, W13

## Ground Floor



Total area: approx. 34.3 sq. metres (369.7 sq. feet)

**Dexters**

Northfields  
140 Northfield Avenue  
London  
W13 9SB  
Sales  
020 8545 8588

Energy Rating: E. We aim to make our particulars both accurate and reliable. However they are not guaranteed; nor do they form part of an offer or contract. If you require clarification on any points then please contact us, especially if you're traveling some distance to view. Please note that appliances and heating systems have not been tested and therefore no warranties can be given as to their good working order.

 **RICS** | Regulated  
Estate Agent  
and Letting Agent

dexters.co.uk