



Grosvenor Road, W7

£660,000

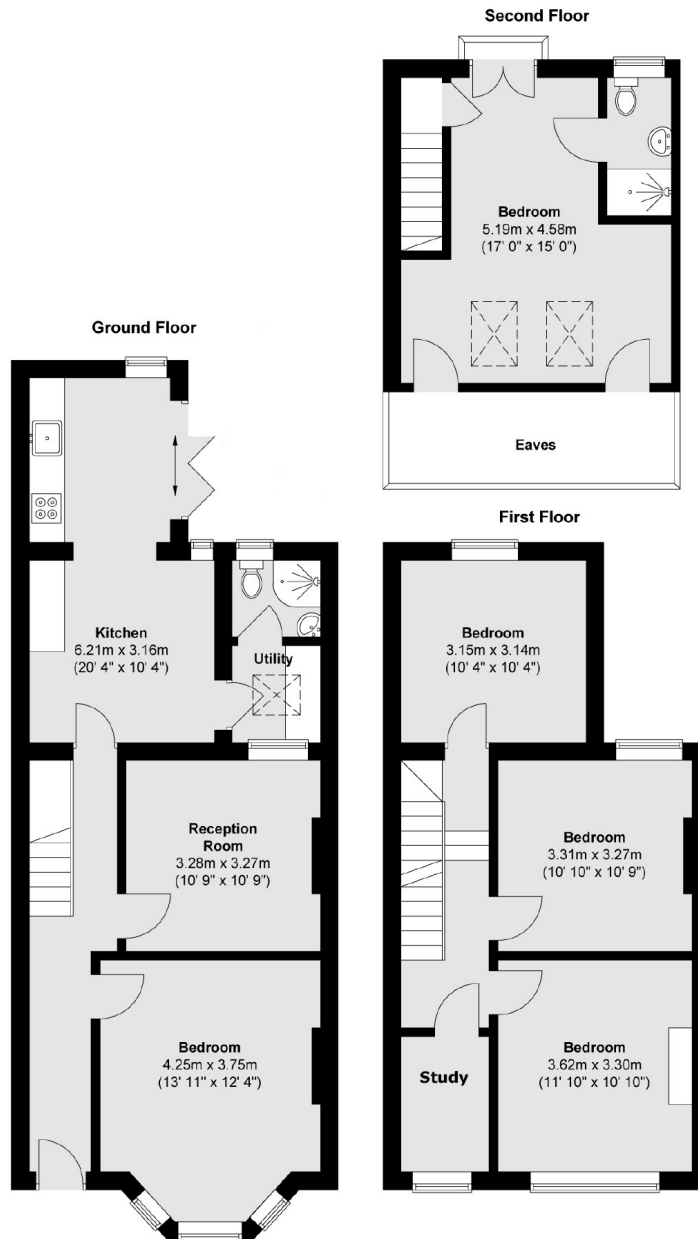
This four bedroom Victorian house is chain free, with four good sized bedroom. The house has been fully extended and is suitable for residential buyers or buy to let investors.

Ideally located for both Hanwell Station and West Ealing Station (both Crossrail links) as well as Boston Manor (Piccadilly). Elthorne Park a short stroll to enjoy a wonderful outdoor amenity.

Features

- Four Bedrooms
- Two Bathrooms
- Hanwell Station (Crossrail)
- No Onward Chain
- 1400 sq. ft

Grosvenor Road, London, W7



Total area (approx.) : 130.7 sq. m (1407 sq. ft)
Total balcony area (approx.) : 0.4 sq. m (4 sq. ft)