



Culmington Road, W13

£530,000

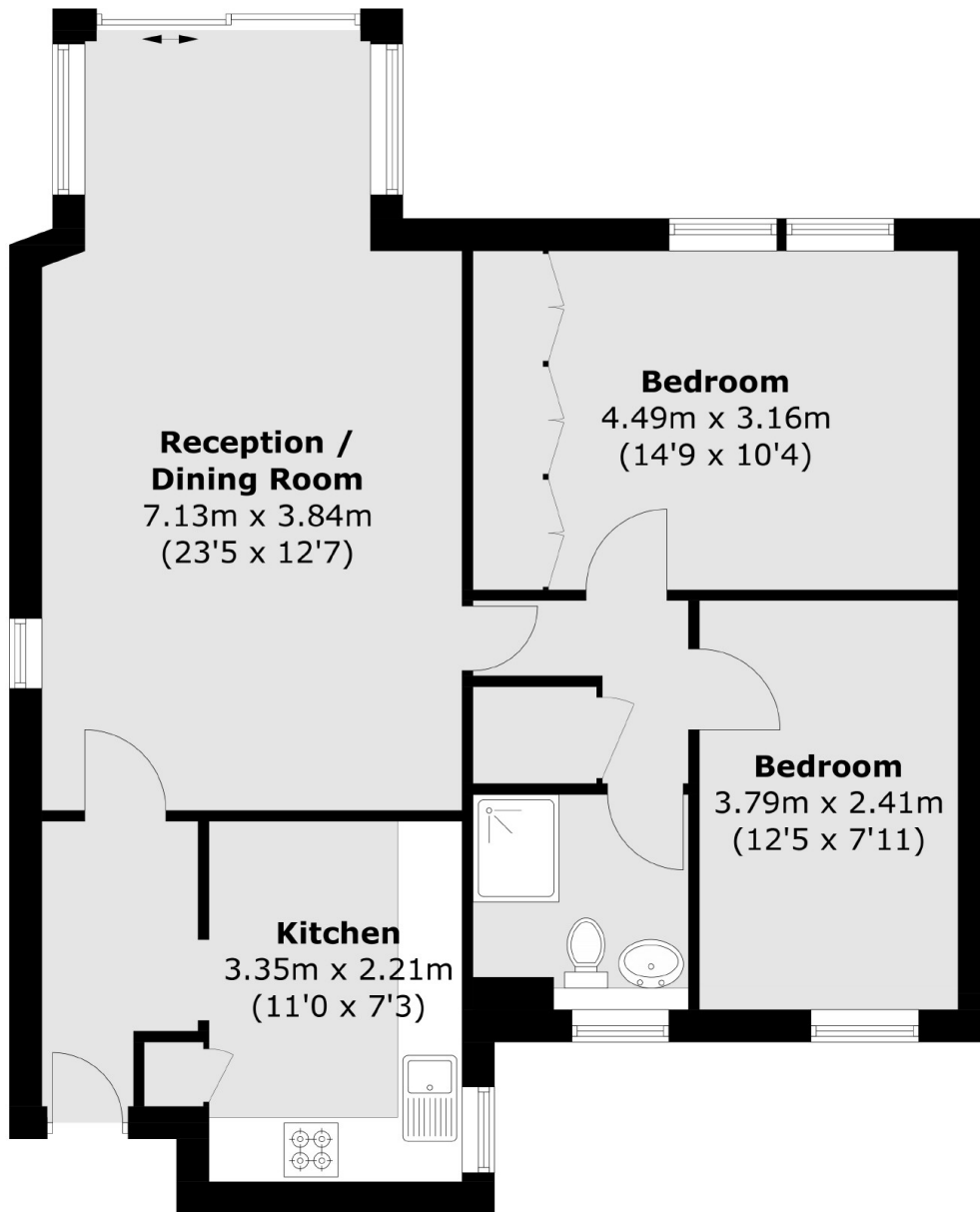
This is a must see two bedroom ground floor flat set in this sought after development located adjacent to Walpole Park.

Ideally located for all amenities at both Ealing Broadway and Northfields and offered with no onward chain.

Features

- Two Bedroom Apartment
- Ground Floor
- Excellent Condition
- Two Parking Spaces
- No Onward Chain
- Adjacent to Walpole Park

Culmington Road,
London, W13



Ground Floor

Total area (approx.): 70.6 sq. m (759.9 sq. ft)

Dexters

Northfields
140 Northfield Avenue
London
W13 9SB
Sales
020 8545 8588

Energy Rating: D. We aim to make our particulars both accurate and reliable. However they are not guaranteed; nor do they form part of an offer or contract. If you require clarification on any points then please contact us, especially if you're traveling some distance to view. Please note that appliances and heating systems have not been tested and therefore no warranties can be given as to their good working order.

 **RICS** | Regulated
Estate Agent
and Letting Agent

dexters.co.uk